



NORKA Luminaire HAMM single lamp

IP 65   for T5 lamps



Luminaire HAMM single lamp

Lamps T5   Ø 16 mm

Housing: glass fibre reinforced polyester, with PMMA or PC reflector tube medium beam or narrow beam, with insertion ramp, centring and retaining spring

Electronics: built-in electronic ballast, 2 cable entries M20, through-wiring 2 x 1,5 mm².

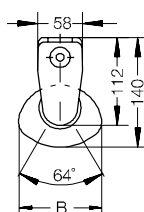
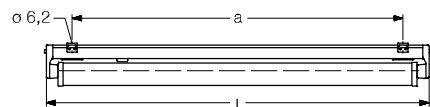
1 access cover 130 mm, alternatively 2 access covers 130 mm for continuous row connection

Mounting: 2 stainless steel mounting clamps

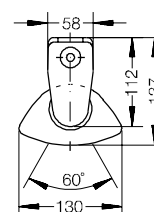
Gaskets: silicone-/synthetic rubber, non-ageing, form-retaining, short sealing system

Version/Wattage	Order no.	Version/Wattage	Order no.
Luminaire HAMM T5 with reflector tube 09 medium beam			
PMMA clear – standard version –			
1 x 21 T5 HF	401 270	- PMMA clear, impact resistant	
1 x 24 T5 HF	401 170	- 24	207 323
1 x 28 T5 HF	401 070	- 21/39	207 321
1 x 35 T5 HF	401 370	- 28/54	207 327
1 x 39 T5 HF	401 570	- 35/49/80	207 328
1 x 49 T5 HF	401 970	- PC clear, (fracture proof)	
1 x 54 T5 HF	401 770	- 24	505 323
1 x 80 T5 HF	401 870	- 21/39	505 321
		- 28/54	505 327
		- 35/49/80	505 328
Luminaire HAMM without reflector tube			
1 x 21 T5 HF	401 27V	- PC clear (fracture proof), inside ribbed	
1 x 24 T5 HF	401 17V	- 24	505 333
1 x 28 T5 HF	401 07V	- 21/39	505 331
1 x 35 T5 HF	401 37V	- 28/54	505 337
1 x 39 T5 HF	401 57V	- 35/49/80	505 338
1 x 49 T5 HF	401 97V	- PC clear (fracture proof), with cross louvre	
1 x 54 T5 HF	401 77V	- 24	505 423
1 x 80 T5 HF	401 87V	- 21/39	505 421
		- 28/54	505 427
		- 35/49/80	505 428
		- PC clear (fracture proof), with round louvre, metallised with bi-reflectors	
		- 24	501 489
		- 21/39	501 481
		- 28/54	501 490
		- 35/49/80	501 488
		- PC clear (fracture proof), inside ribbed, with cross louvre	
		- 24	505 433
		- 21/39	505 431
		- 28/54	505 437
		- 35/49/80	505 438
		Reflector tube 09 narrow beam	
		- PMMA clear	
		- 24	205 399
		- 21/39	205 390
		- 28/54	205 391
		- 35/49/80	205 398
		- PMMA clear, with cross louvre	
		- 24	205 389
		- 21/39	205 380
		- 28/54	205 381
		- 35/49/80	205 388
		- PC clear (fracture proof)	
		- 24	505 399
		- 21/39	505 390
		- 28/54	505 391
		- 35/49/80	505 398
		- PC clear (fracture proof), with cross louvre	
		- 24	505 389
		- 21/39	505 380
		- 28/54	505 381
		- 35/49/80	505 388
		Accessories and additional prices	
		Reflector tube 09 medium beam	
		- PMMA clear	
		- 24	205 323
		- 21/39	205 321
		- 28/54	205 327
		- 35/49/80	205 328
		- PMMA clear, inside ribbed	
		- 24	205 333
		- 21/39	205 331
		- 28/54	205 337
		- 35/49/80	205 338
		- PMMA clear, with cross louvre	
		- 24	205 423
		- 21/39	205 421
		- 28/54	205 427
		- 35/49/80	205 428
		- PMMA clear, inside ribbed with cross louvre	
		- 24	205 433
		- 21/39	205 431
		- 28/54	205 437
		- 35/49/80	205 438
		- PMMA clear, with round louvre , metallised with bi-reflectors	
		- 24	201 489
		- 21/39	201 481
		- 28/54	201 490
		- 35/49/80	201 488
		- PMMA transopal, impact resistant	
		- 24	207 333
		- 21/39	207 331
		- 28/54	207 337
		- 35/49/80	207 338

	L	Dimensions in mm			Weight approx. kg
		B	H	a	
21 W	886	107	140	650 ± 50	1,9
24 W	586	107	140	350 ± 50	1,5
28 W	1186	107	140	930 ± 80	2,3
35 W	1486	107	140	1230 ± 80	2,7
39 W	886	107	140	650 ± 50	1,9
54 W	1186	107	140	930 ± 80	2,3
49 W	1486	107	140	1230 ± 80	2,7
80 W	1486	107	140	1230 ± 80	2,7



with reflector tube 09
medium beam



with reflector tube 09
narrow beam

Version/Wattage	Order no.
Continuous row version (2 access covers 130 mm)	
for continuous row mounting	
- 21/24/39	401 082
- 28/54	401 084
- 35/49/80	401 086
Through-wiring 4 x 1,5 mm²	
- 24	401 801
- 21/39	401 803
- 28/54	401 804
- 35/49/80	401 806
Plastic cable glands with strain relief	
M20	200 427
M20 (pair)	201 427
Wire suspension for 1 m suspension (pair)	200 278
Plastic mounting clamps	
for aggressive atmosphere	200 226
Colour finish according to RAL	401 960
Spare parts	
Face piece with contact insert	513 30
Holding frame	201 95
Mounting clamp	200 222
Contact insert	200 310
Threaded ring	200 309



Medium beam and narrow beam reflector tube 09 for T5 lamps with insertion ramp, centring and retaining spring

Face piece with T5 contact insert



NORKA Luminaire HAMM twin lamp

IP 65   for lamps T5



Luminaire HAMM twin lamp

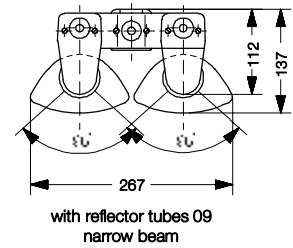
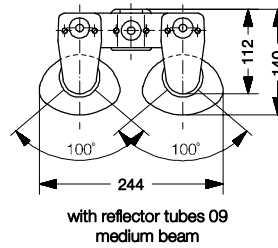
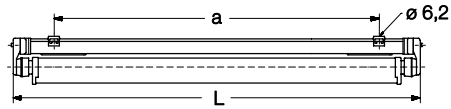
Housing: glass fibre reinforced polyester, lamp holder thermoplastic PBT
Electronics: ballast and starter or electronic ballast, through-wiring 2 x 1,5 mm². 1 access cover 130 mm
Mounting: 2 stainless steel mounting clamps
Gaskets: silicone-/synthetic rubber, non-ageing, form-retaining, short sealing system

Lamps T5  Ø 16 mm

Version/Wattage	Order no.	Version/Wattage	Order no.
Luminaire HAMM T5 with reflector tube 09 medium beam		- PC clear (fracture proof)	
PMMA clear – standard version –		2 x 21/39	505 321
2 x 21 T5 HF	403 270	2 x 28/54	505 327
2 x 28 T5 HF	403 070	2 x 35/49/80	505 328
2 x 35 T5 HF	403 370	- PC clear (fracture proof), inside ribbed	
2 x 39 T5 HF	403 570	2 x 21/39	505 331
2 x 49 T5 HF	403 970	2 x 28/54	505 337
2 x 54 T5 HF	403 770	2 x 35/49/80	505 338
2 x 80 T5 HF	403 870	- PC clear (fracture proof), with cross louvre	
Luminaire HAMM T5 without reflector tube		2 x 21/39	505 421
2 x 21 T5 HF	403 27V	2 x 28/54	505 427
2 x 28 T5 HF	403 07V	2 x 35/49/80	505 428
2 x 35 T5 HF	403 37V	- PC clear (fracture proof), with round louvre, metallised with bi-reflectors	
2 x 39 T5 HF	403 57V	2 x 21/39	501 481
2 x 49 T5 HF	403 97V	2 x 28/54	501 490
2 x 54 T5 HF	403 77V	2 x 35/49/80	501 488
2 x 80 T5 HF	403 87V	- PC clear (fracture proof), inside ribbed, with cross louvre	
		2 x 21/39	505 431
		2 x 28/54	505 437
		2 x 35/49/80	505 438
Accessories and additional prices		Reflector tube 09 narrow beam	
Reflector tube 09 medium beam		- PMMA clear	
- PMMA clear		2 x 21/39	205 390
2 x 21/39	205 321	2 x 28/54	205 391
2 x 28/54	205 327	2 x 35/49/80	205 398
2 x 35/49/80	205 328	- PMMA clear, with cross louvre	
- PMMA clear, inside ribbed		2 x 21/39	205 380
2 x 21/39	205 331	2 x 28/54	205 381
2 x 28/54	205 337	2 x 35/49/80	205 388
2 x 35/49/80	205 338	- PC clear (fracture proof)	
- PMMA clear, with cross louvre		2 x 21/39	505 390
2 x 21/39	205 421	2 x 28/54	505 391
2 x 28/54	205 427	2 x 35/49/80	505 398
2 x 35/49/80	205 428	- PC clear (fracture proof), with cross louvre	
- PMMA clear, inside ribbed with cross louvre		2 x 21/39	505 380
2 x 21/39	205 431	2 x 28/54	505 381
2 x 28/54	205 437	2 x 35/49/80	505 388
2 x 35/49/80	205 438		
- PMMA clear, with round louvre, metallised with bi-reflectors			
2 x 21/39	201 481		
2 x 28/54	201 490		
2 x 35/49/80	201 488		
- PMMA transopal, impact resistant			
2 x 21/39	207 331		
2 x 28/54	207 337		
2 x 35/49/80	207 338		
- PMMA clear, impact resistant			
2 x 21/39	207 321		
2 x 28/54	207 327		
2 x 35/49/80	207 328		

T5 lamps for reflector tubes 09 medium beam

	L	Dimensions in mm		a	Weight approx. kg
		B	H		
21 W	889	244	140	650 ± 50	2,1
28 W	1189	244	140	930 ± 80	2,5
35 W	1489	244	140	1230 ± 80	2,9
39 W	889	244	140	650 ± 50	2,1
54 W	1189	244	140	930 ± 80	2,5
49 W	1489	244	140	1230 ± 80	2,9
80 W	1489	244	140	1230 ± 80	2,9



Version/Wattage	Order no.
Continuous row version (2 access covers 130 mm) for continuous row mounting	
- 21/39	403 082
- 28/54	403 084
- 35/49/80	403 086
Through-wiring 4 x 1,5 mm ²	
- 21/39	403 803
- 28/54	403 804
- 35/49/80	403 806
Plastic cable glands with strain relief	
M20	200 427
M20 (pair)	201 427
Wire suspension for 1 m suspension (pair)	200 278
Plastic mounting clamps for aggressive atmosphere	200 226
Colour finish according to RAL	403 960

Version/Wattage	Order no.
Spare parts	
Face piece with contact insert	521 75
Holding frame	201 95
Mounting clip	200 222
Contact insert	200 310
Threaded ring	200 309

Cost effectiveness compared on a production hall

20 x 20 m · room high 10 m · Average illuminance 300 lux



HAMM 2 x 80 W with reflector tube narrow beam
 T5 lamp



POLLUX 1 x 250 W HIT
 HIT E40

Annual operating cost



Initial cost



Annual total cost

