

IP 65     IK 08, 850°C

-certified

Compact polymer luminaire. Single lamp or twin lamp, with PC housing and PC lamp diffuser, inside ribbed or clear. Aluminium reflector, wide, extreme wide or asymmetric beam. With integrated low loss ballast and starter or ECG. Ready for connection through four cable entries.



**PC (facture proof) clear, inside ribbed**

– standard version – single lamp

– standard version – single lamp

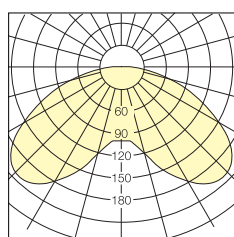
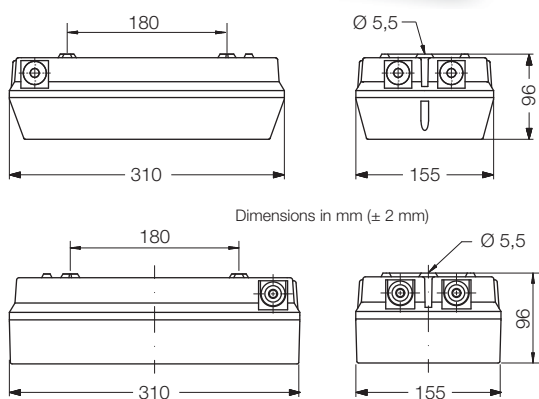
Version	Lamp	Ref. no.	Socket	Weight kg (approx.)	Version	Lamp	Ref. no.	Socket	Weight kg (approx.)	
1 x 9/11 W	ind.	TC-S	G23	1.2	2 x 9 W *	ind.	TC-S	422 050	G23	1.2
1 x 9/11 W	ECG	TC-SEL	2G7	1.2	2 x 9/11 W	ECG	TC-SEL	422 070	2G7	1.5
1 x 18 W	ind.	TC-L	2G11	1.6	2 x 9/11 W	ind.	TC-S	422 110	G23	1.6
1 x 18 W	ind.	TC-D	G24d-2	1.6	2 x 18 W *	ind.	TC-L	422 150	2G11	1.7
1 x 26 W	ind.	TC-D	G24d-3	1.5	2 x 18 W	ind.	TC-L	422 190	2G11	2.4
1 x 18 W	ECG	TC-L	2G11	1.3	2 x 18 W	ECG	TC-L	422 170	2G11	1.6

\* tandem switching

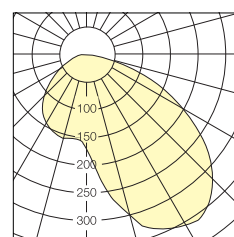
BERLIN TC



Compact single lamp and twin lamp luminaire, hinged lamp diffuser and reflector, captive



1 x TC-L 18 W lamp diffuser  
PC clear, inside ribbed, wide beam



1 x TC-L 18 W lamp diffuser  
PC clear, asymmetric beam



Version with straight side panels



Version with transparent housing



Version with transopal lamp diffuser

with PC lamp diffuser (facture proof) clear, inside ribbed  
straight side panels internal reflector, asymmetric beam

Version	Lamp	Ref. no.	Socket	Weight kg (approx.)	Version	Lamp	Ref. no.	Socket	Weight kg (approx.)		
1 x 18 W	ind.	TC-L	421 280	2G11	1.6	1 x 18 W	ind.	TC-L	421 200	2G11	1.6
1 x 18 W	ECG	TC-L	421 370	2G11	1.3	1 x 18 W	ECG	TC-L	421 470	2G11	1.3
2 x 18 W	ind.	TC-L	422 280	2G11	2.4						

IP 65     IK 08, 850 °C

-certified

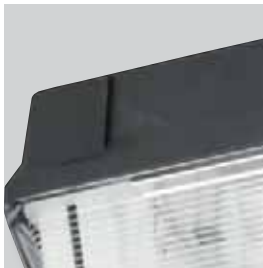
# BERLIN TC



Cable glands with strain relief (M20)



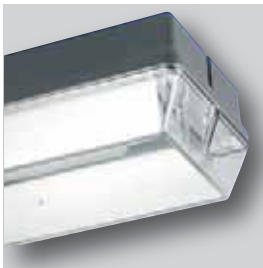
Ceiling installation with installation frame



BERLIN with sealed cable entry (for prisons)



Wall mounting fixation in stainless steel



Lamp diffuser, clear



BERLIN with allen or 2-hole screw



Lamp diffuser opal white for lettering, straight side panels



Pictogram for emergency lighting



Anti-vibration damper for low-vibration suspension, for ceiling and surface mounting

IP 65    **CE** IK 08, 850 °C

**DB**-certified

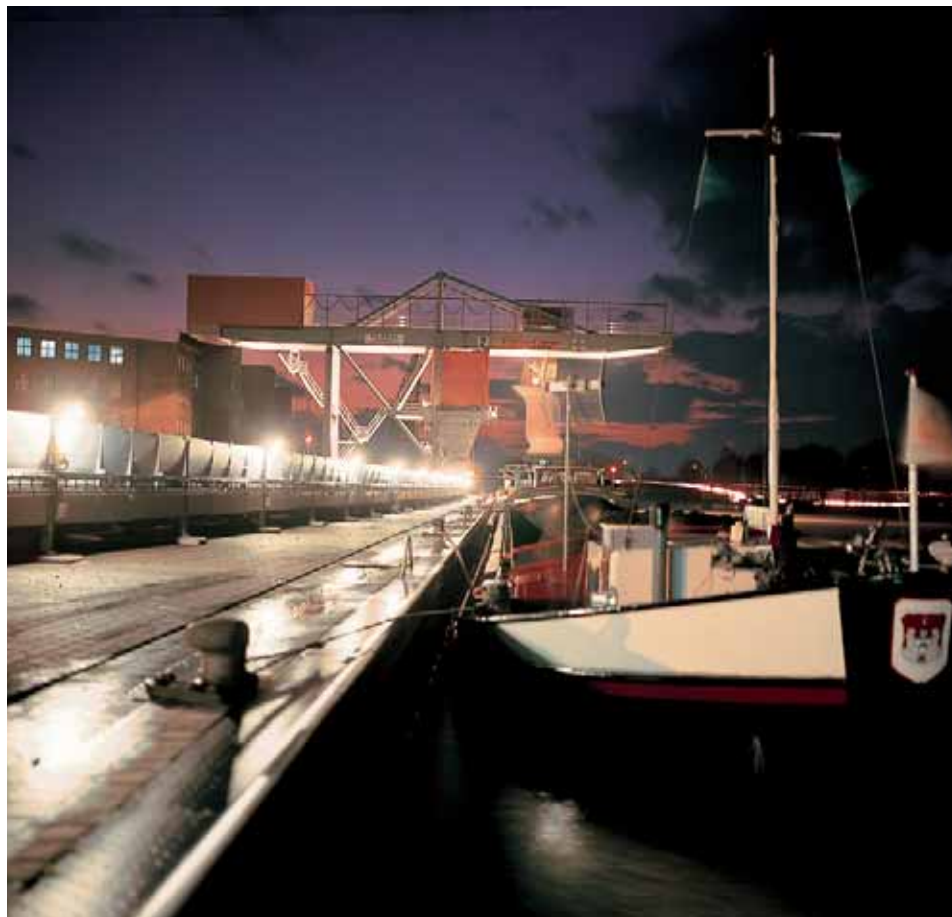
Compact luminaire in PC, polymer housing, thermally stable, corrosion resistant, anthracite.

BERLIN LED with integrated transformer.

BERLIN LED 230 V without transformer, with cold resistant connecting cable and mounting plate with fixation apertures.



BERLIN LED



**BERLIN LED,**  
80 lm/W, beam angle 120°, 5400 K

Version	Ambient temperature	LED capacity	Weight kg (approx.)	Ref. no.
6 LED	-30 °C to +35 °C	7.2 W	1.0	421 301
12 LED	-30 °C to +35 °C	14.4 W	1.0	421 311
18 LED	-30 °C to +15 °C	21.6 W	1.0	421 312

**BERLIN LED 230 V,**  
60 lm/W, beam angle 120°, 5400 K

Version	Ambient temperature	LED capacity	Weight kg (approx.)	Ref. no.
4 LED	-40 °C to +35 °C	8.0 W	1.0	421 410
8 LED	-40 °C to +20 °C	16.0 W	1.0	421 420

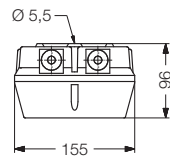
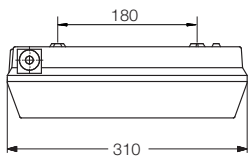
with cold resistant 2.0 m connecting cable and fixation apertures

**Optional:** pictograms,  
colour temperature 3300 K, 4000 K  
**Other versions available on request**



TEGEL luminaire with 6 blue LED and diffuser, wide beam, for special applications

**BERLIN LED**



**BERLIN LED 230 V**

