

IP 65   
 IK 08, 650 °C – PMMA



Profile luminaire made of anodised aluminium with triple LED chassis insert. Cover screens in clear PMMA, flush end covers. With RGB LED, in opal PMMA. Ready for connection to external transformer through M20 cable gland at face side, side cover with pressure balancing system. For wall and ceiling mounting with aluminium clamps.



# BRIG LED

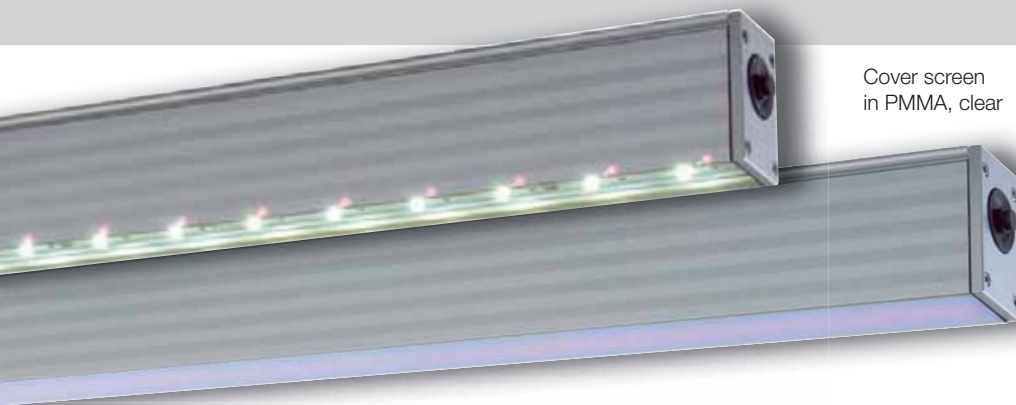
**BRIG LED luminaire,**  
 24 V, approx. 80 lm/W, 5400 K

Version	Ref. no.	L ± 2 mm	a ± 50 mm
12 LED 1.2 W	539 412	508	366
24 LED 1.2 W	539 424	988	846
48 LED 1.2 W	539 448	1948	1806

**BRIG RGB LED luminaire, 24 V,**  
 Screen opal white – controller to be provided on site –

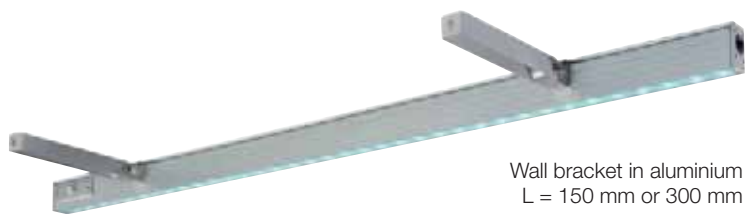
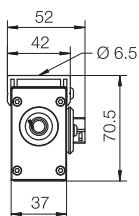
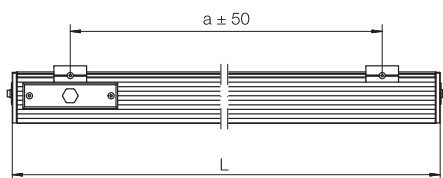
Version	Ref. no.	L ± 2 mm	a ± 50 mm
20 LED 5.6 W	539 211	428	286
50 LED 14.0 W	539 251	1028	886
90 LED 25.2 W	539 291	1828	1686

**Optional:** colour temperature 3300 K, 4000 K  
**Other versions available on request**

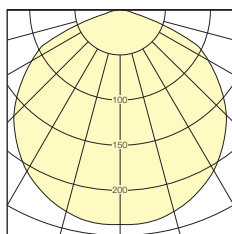


Cover screen in PMMA, clear

Cover screen in PMMA, opal, flush edge, with RGB LED

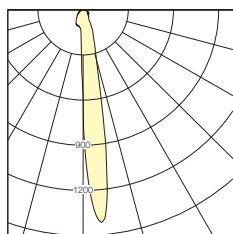


Wall bracket in aluminium  
L = 150 mm or 300 mm



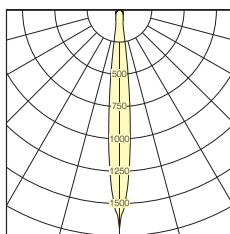
I (cd/klm) LOR = 68 %

60 lm/W  
beam angle 120°



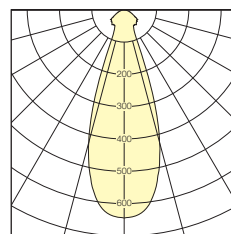
I (cd/klm) LOR = 64 %

60 lm/W  
with 6° linear  
Fresnel lens



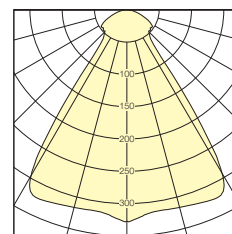
I (cd/klm) LOR = 68 %

60 lm/W  
with 12° linear  
Fresnel lens



I (cd/klm) LOR = 70 %

60 lm/W  
with 30° linear  
Fresnel lens



I (cd/klm) LOR = 70 %

60 lm/W  
with 60° linear  
Fresnel lens



without lens 120°



version with  
linear Fresnel lens  
6° asymmetric beam  
available on request



version with  
12° linear Fresnel lens  
available on request



version with  
30° linear Fresnel lens  
available on request



version with  
60° linear Fresnel lens  
available on request

**BRIG LED luminaire, 230 V, PC I**

60 lm/W, beam angle 120°, 5400 K, supply voltage 230 V AC

Version	Ref. no.	Ref. no.	Ref. no.	Ref. no.	L ± 2 mm
<b>without lens 120°</b>		<b>with 6° Fresnel lens</b>	<b>with 30° Fresnel lens</b>	<b>with 60° Fresnel lens</b>	
8 LED 2 W	539 611	539 612	539 615	539 613	508
16 LED 2 W	539 621	539 622	539 625	539 623	988
24 LED 2 W	539 631	539 632	539 635	539 633	1468
32 LED 2 W	539 641	539 642	539 645	539 643	1948