

IP 65 ball impact resistant -certified
 IK 08, 650 °C – PMMA, IK 10, 850 °C – PC
 IK 07, 960 °C – glass * available on request



Single lamp aluminium profile luminaire.
 Luminaire housing made of anodised aluminium with cover screen in PMMA, PC or safety glass in aluminium frame.
 Glare reduction of cover screen through decorative screen print pattern.
 Internal aluminium mirror finish reflector, wide, concentrated or asymmetric beam.
 With integrated low loss ballast and starter or ECG. Through wiring 4 x 1.5 mm².
 Ready for connection with two rearward M20 cable glands.
 Two-point fixation rearward.
 Also available in ball impact resistant version.



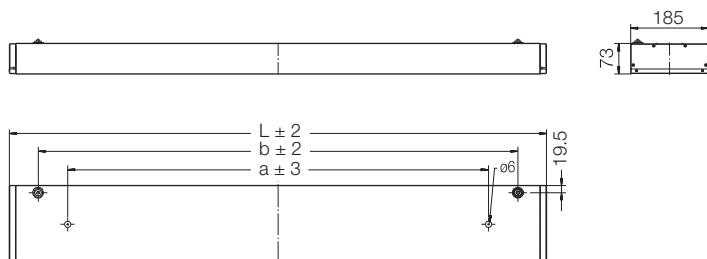
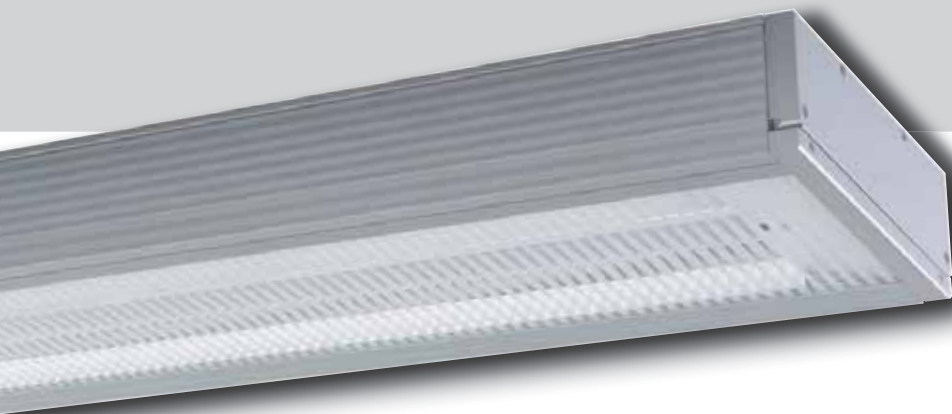
Screw fixation of locking mechanism



DUBLIN T5/T8

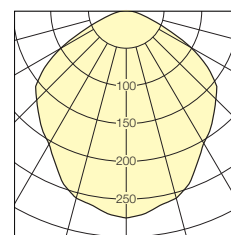
– standard version – with PMMA cover screen with decorative screen print pattern

		wide	VDU louvre		concentrated	asymmetric			wide	VDU louvre		concentrated	asymmetric
1 x 21 W	ECG T5	580 171	–	–	581 171	583 171	1 x 39 W	ECG T5	580 570	–	–	581 570	583 570
1 x 24 W	ECG T5	580 170	–	–	581 170	583 170	1 x 49 W	ECG T5	580 970	582 970	–	581 970	583 970
1 x 28 W	ECG T5	580 070	582 070	–	581 070	583 070	1 x 54 W	ECG T5	580 770	582 770	–	581 770	583 770
1 x 35 W	ECG T5	580 370	582 370	–	581 370	583 370	1 x 80 W	ECG T5	580 870	582 870	–	583 870	582 870

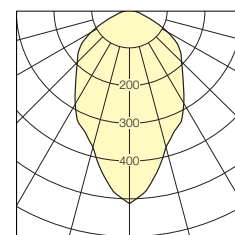


Dimensions in mm (± 2 mm)

Version	L	a	b
18/24 W	666	390 ± 3	530
21/39 W	976	700 ± 3	840
28/36/54 W	1276	1000 ± 3	1140
35/49/58/80 W	1576	1300 ± 3	1440

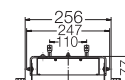
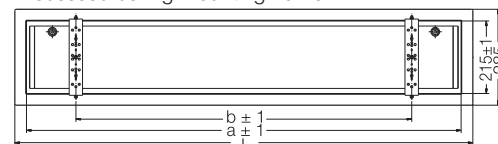


1 x T8 / 58 W
wide beam



1 x T5 / 54 W
concentrated beam

Recessed ceiling mounting frame



Version	Dimensions in mm (± 2 mm)			Required ceiling cut-out
	L	a	b	
18/24 W	754	684	390	700 x 256
28/36/54 W	1364	1294	1000	1310 x 256
35/49/58/80 W	1664	1594	1300	1610 x 256

Opal cover screen for lettering



With emergency gear for central battery operation



Tool-free opening

– standard version – with PMMA cover screen with decorative screen print pattern

wide						concentrated						asymmetric					
1 x 18 W	comp.	T8	580	220	581	220	583	220	1 x 58 W	comp.	T8	580	620	581	620	583	620
	ECG	T8	580	270	581	270	583	270		ECG	T8	580	670	581	670	583	670
1 x 36 W	comp.	T8	580	420	581	420	583	420	1 x 58 W	comp.	T8	580	620	581	620	583	620
	ECG	T8	580	470	581	470	583	470		ECG	T8	580	670	581	670	583	670

IP 65     * available on request
 IK 08, 650 °C – PMMA, IK 10, 850 °C – PC
 IK 07, 960 °C – glass

Single lamp aluminium profile luminaire.
 Luminaire housing made of anodised aluminium with cover screen in PMMA, PC or safety glass in aluminium frame.
 Integrated operating device.
 Through wiring 4 x 1.5 mm².
 Ready for connection with two rearward M20 cable glands.
 Two-point fixation rearward.



DUBLIN LED



With RGB LED for anaesthetic recovery rooms

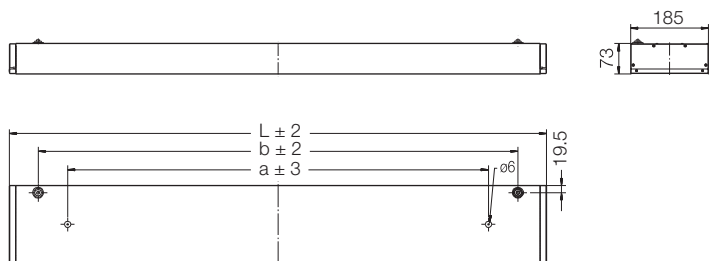
DUBLIN LED,
 80 lm/W, 5400 K, built-in transformer 230 V AC/DC

Version	Ref. no.
36 1.2 W LED with linear non-glare prisms	584 136

Optional: colour temperature 3300 K, 4000 K
Other versions available on request

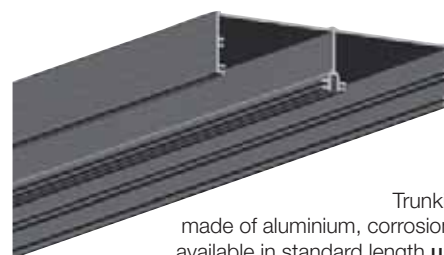


DUBLIN LED
with linear anti glare prisms

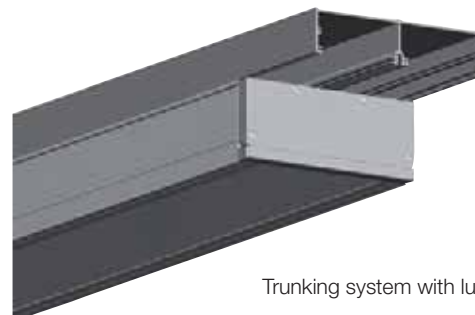


Dimensions in mm (± 2 mm)

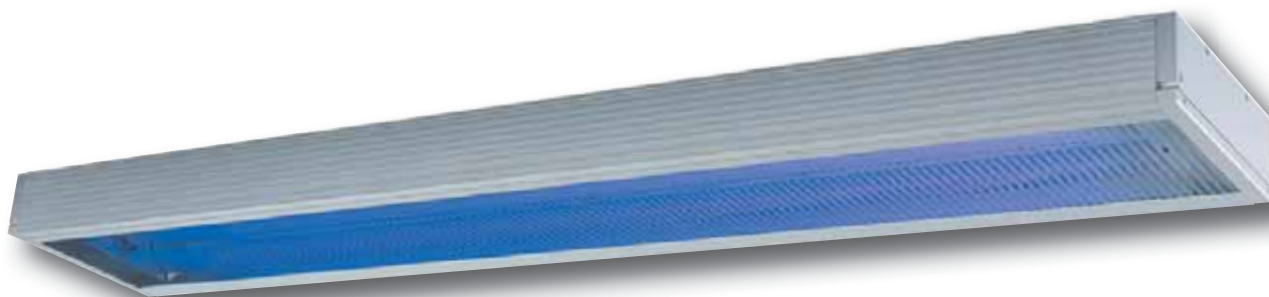
Version	L	a	b
36 LED	1576	1300 ± 3	1440



Trunking system
made of aluminium, corrosion resistant,
available in standard length **up to 4.0 m**



Trunking system with luminaire



With fluorescent lamp and blue LED,
day/night switching