

# NORKA Luminaire HAMM single lamp

IP 65      CE shock-tested and in V-version available



## Luminaire HAMM single lamp

**Housing:** glass fibre reinforced polyester, lamp holder thermoplastic PBT

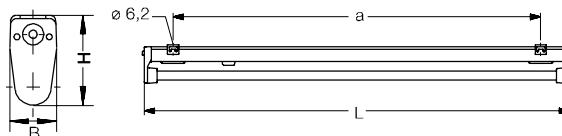
**Electronics:** ballast and starter or electronic ballast, through-wiring 2 x 1,5 mm<sup>2</sup>. 1 access cover 130 mm

**Mounting:** 2 stainless steel mounting clamps

**Gaskets:** silicone-/synthetic rubber, non-ageing, form-retaining, short sealing system

Lamps T8  Ø 26 mm

	Dimensions in mm				Weight approx. kg
	L	B	H	a	
18 W	627	58	112	510 ± 30	1,3
36 W	1237	58	112	1070 ± 80	1,8
58 W	1537	58	112	1370 ± 80	2,5

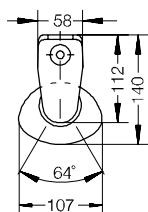


Version/Wattage	Order no.	Version/Wattage	Order no.
<b>Luminaire HAMM single lamp</b>			
<b>- standard version -</b>			
<b>1 x 18</b>	ind. 400 21	<b>- PC clear (fracture proof), inside ribbed, with reflector *</b>	
	comp. 400 22	- 18	505 913
	HF 400 27	- 36	505 915
		- 58	505 917
<b>1 x 36</b>	ind. 400 41	<b>Reflector tube medium beam</b>	
	comp. 400 42	<b>- PMMA clear</b>	
	HF 400 47	- 18	205 822
<b>1 x 58</b>	ind. 400 61	- 36	205 824
	comp. 400 62	- 58	205 826
	HF 400 67	<b>- PMMA clear, inside ribbed</b>	
		- 18	205 832
		- 36	205 834
		- 58	205 836
<b>Luminaire HAMM single lamp with threaded rings 38 mm</b>			
<b>for protective tube, reflector tube</b>			
<b>1 x 18/20</b>	ind. 400 211	<b>- PC clear (fracture proof)</b>	
	comp. 400 221	- 18	505 822
	HF 400 27V	- 36	505 824
		- 58	505 826
<b>1 x 36/40</b>	ind. 400 411	<b>- PC clear (fracture proof), inside ribbed</b>	
	comp. 400 421	- 18	505 832
	HF 400 47V	- 36	505 834
		- 58	505 836
<b>1 x 58/65</b>	ind. 400 611	<b>- PMMA clear, with cross louvre</b>	
	comp. 400 621	- 18	205 922
	HF 400 67V	- 36	205 924
		- 58	205 926
		<b>- PC clear (fracture proof), with cross louvre</b>	
		- 18	505 922
		- 36	505 924
		- 58	505 926
<b>Accessories and additional prices</b>			
<b>protective tube Ø 38 mm</b>			
<b>- Clear glass</b>			
- 18	205 802	<b>Reflector tube medium beam</b>	
- 36	205 804	<b>with round louvre , metallised with bi-reflectors</b>	
- 58	205 806	<b>- PMMA clear</b>	
<b>- Clear glass with reflector</b>			
- 18	205 803	- 18	201 483
- 36	205 805	- 36	201 485
- 58	205 807	- 58	201 487
<b>- PC clear (fracture proof) *</b>			
- 18	505 812	<b>- PC clear (fracture proof)</b>	
- 36	505 814	- 18	501 483
- 58	505 816	- 36	501 485
<b>- PC clear (fracture proof) with reflector*</b>			
- 18	505 813	- 58	501 487
- 36	505 815	<b>Reflector tube medium beam</b>	
- 58	505 817	<b>- PMMA transopal, impact resistant</b>	
<b>- PC clear (fracture proof), inside ribbed*</b>			
- 18	505 912	- 18	207 832
- 36	505 914	- 36	207 834
- 58	505 916	- 58	207 836
		<b>- PMMA clear, impact resistant</b>	
		- 18	207 822
		- 36	207 824
		- 58	207 826

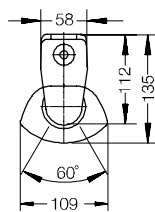
\* For use with safety starter/electronic ballast only

# Luminaire HAMM single lamp

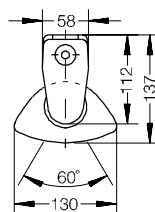
IP 65      CE shock-tested and in VVF-version available

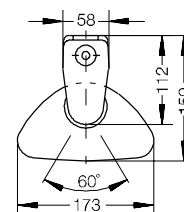
with reflector tube  
medium beam



with high-efficiency reflector tube 08  
medium beam





with reflector tube  
narrow beam



with reflector tube  
concentrated beam

Version/Wattage	Order no.	Version/Wattage	Order no.
<b>High-efficiency reflector tube 08 medium beam</b>		<b>Wire suspension for 1 m suspension (pair)</b>	
- 18	208 822		200 278
- 36	208 824	<b>Cable suspension for 1 m suspension (pair)</b>	
- 58	208 826		200 275
<b>- PC clear (fracture proof)</b>		<b>Plastic mounting clip for aggressive atmosphere</b>	
- 18	508 822		200 226
- 36	508 824	<b>Colour finish according to RAL</b>	
- 58	508 826		400 960
<b>Reflector tube narrow beam</b>		<b>Heat-resistant version +60°C</b>	
<b>- PMMA clear</b>		- 18	400 852
- 18	205 992	- 36	400 854
- 36	205 994	- 58	400 856
- 58	205 996	<b>▽▽ -Version with low loss ballast</b>	
<b>- PC clear (fracture proof)</b>		- 18	400 162
- 18	505 992	- 36	400 164
- 36	505 994	- 58	400 166
- 58	505 996	<b>▽▽ -Version with electronic ballast</b>	
<b>Reflector tube concentrated beam</b>			400 16
<b>- PMMA clear</b>		<b>Shock-tested version</b>	
- 18	205 842		400 75
- 36	205 844	<b>Spare parts</b>	
- 58	205 846	<b>Face piece with contact insert</b>	
<b>Through-wiring 4 x 1,5 mm<sup>2</sup></b>			187 96
- 18	400 802	<b>Starter cover</b>	
- 36	400 804		141 70
- 58	400 806	<b>Holding frame</b>	
<b>Continuous row version (2 access covers 130 mm) for continuous row mounting</b>			201 95
- 18	400 082	<b>Contact insert</b>	
- 36	400 084		200 316
- 58	400 086	<b>Starter socket</b>	
<b>Continuous row connector - 4 x 1,5 mm<sup>2</sup></b>			118 77
	200 413	<b>Threaded ring</b>	
<b>Safety clamp/theft protection</b>		- 26 mm	200 308
2 pieces required	200 224	- 38 mm	200 309
<b>NORKA safety starter electronic</b>		<b>Mounting clamp</b>	
	200 92		200 222
<b>Safety-/rapid starter (DEOS)</b>		<b>Ballast</b>	
	200 11	- 18	212 0
<b>Plastic cable gland with strain relief</b>		- 36	214 0
M 20	200 427	- 58	216 5
M 20 (pair)	201 427		

# NORKA Luminaire HAMM single lamp

IP 65   for T5 lamps



## Luminaire HAMM single lamp

Lamps T5   Ø 16 mm

**Housing:** glass fibre reinforced polyester, with PMMA or PC reflector tube medium beam or narrow beam, with insertion ramp, centring and retaining spring

**Electronics:** built-in electronic ballast, 2 cable entries M20, through-wiring 2 x 1,5 mm<sup>2</sup>.

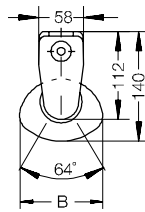
1 access cover 130 mm, alternatively 2 access covers 130 mm for continuous row connection

**Mounting:** 2 stainless steel mounting clamps

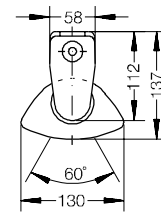
**Gaskets:** silicone-/synthetic rubber, non-ageing, form-retaining, short sealing system

Version/Wattage	Order no.	Version/Wattage	Order no.
<b>Luminaire HAMM T5 with reflector tube 09 medium beam</b>			
<b>PMMA clear – standard version –</b>			
1 x 21 T5 HF	401 270	- PMMA clear, impact resistant	
1 x 24 T5 HF	401 170	- 24	207 323
1 x 28 T5 HF	401 070	- 21/39	207 321
1 x 35 T5 HF	401 370	- 28/54	207 327
1 x 39 T5 HF	401 570	- 35/49/80	207 328
1 x 49 T5 HF	401 970	- PC clear, (fracture proof)	
1 x 54 T5 HF	401 770	- 24	505 323
1 x 80 T5 HF	401 870	- 21/39	505 321
		- 28/54	505 327
		- 35/49/80	505 328
<b>Luminaire HAMM without reflector tube</b>			
1 x 21 T5 HF	401 27V	- PC clear (fracture proof), inside ribbed	
1 x 24 T5 HF	401 17V	- 24	505 333
1 x 28 T5 HF	401 07V	- 21/39	505 331
1 x 35 T5 HF	401 37V	- 28/54	505 337
1 x 39 T5 HF	401 57V	- 35/49/80	505 338
1 x 49 T5 HF	401 97V	- PC clear (fracture proof), with cross louvre	
1 x 54 T5 HF	401 77V	- 24	505 423
1 x 80 T5 HF	401 87V	- 21/39	505 421
		- 28/54	505 427
		- 35/49/80	505 428
		- PC clear (fracture proof), with round louvre, metallised with bi-reflectors	
		- 24	501 489
		- 21/39	501 481
		- 28/54	501 490
		- 35/49/80	501 488
		- PC clear (fracture proof), inside ribbed, with cross louvre	
		- 24	505 433
		- 21/39	505 431
		- 28/54	505 437
		- 35/49/80	505 438
		<b>Reflector tube 09 narrow beam</b>	
		- PMMA clear	
		- 24	205 399
		- 21/39	205 390
		- 28/54	205 391
		- 35/49/80	205 398
		- PMMA clear, with cross louvre	
		- 24	205 389
		- 21/39	205 380
		- 28/54	205 381
		- 35/49/80	205 388
		- PC clear (fracture proof)	
		- 24	505 399
		- 21/39	505 390
		- 28/54	505 391
		- 35/49/80	505 398
		- PC clear (fracture proof), with cross louvre	
		- 24	505 389
		- 21/39	505 380
		- 28/54	505 381
		- 35/49/80	505 388
		<b>Accessories and additional prices</b>	
		<b>Reflector tube 09 medium beam</b>	
		- PMMA clear	
		- 24	205 323
		- 21/39	205 321
		- 28/54	205 327
		- 35/49/80	205 328
		- PMMA clear, inside ribbed	
		- 24	205 333
		- 21/39	205 331
		- 28/54	205 337
		- 35/49/80	205 338
		- PMMA clear, with cross louvre	
		- 24	205 423
		- 21/39	205 421
		- 28/54	205 427
		- 35/49/80	205 428
		- PMMA clear, inside ribbed with cross louvre	
		- 24	205 433
		- 21/39	205 431
		- 28/54	205 437
		- 35/49/80	205 438
		- PMMA clear, with round louvre , metallised with bi-reflectors	
		- 24	201 489
		- 21/39	201 481
		- 28/54	201 490
		- 35/49/80	201 488
		- PMMA transopal, impact resistant	
		- 24	207 333
		- 21/39	207 331
		- 28/54	207 337
		- 35/49/80	207 338

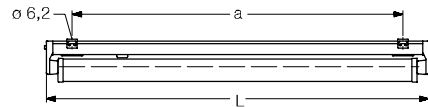
	L	Dimensions in mm			Weight approx. kg
		B	H	a	
21 W	886	107	140	650 ± 50	1,9
24 W	586	107	140	350 ± 50	1,5
28 W	1186	107	140	930 ± 80	2,3
35 W	1486	107	140	1230 ± 80	2,7
39 W	886	107	140	650 ± 50	1,9
54 W	1186	107	140	930 ± 80	2,3
49 W	1486	107	140	1230 ± 80	2,7
80 W	1486	107	140	1230 ± 80	2,7



with reflector tube 09  
medium beam



with reflector tube 09  
narrow beam



Version/Wattage	Order no.
<b>Continuous row version (2 access covers 130 mm)</b>	
for continuous row mounting	
- 21/24/39	401 082
- 28/54	401 084
- 35/49/80	401 086
<b>Through-wiring 4 x 1,5 mm<sup>2</sup></b>	
- 24	401 801
- 21/39	401 803
- 28/54	401 804
- 35/49/80	401 806
<b>Plastic cable glands with strain relief</b>	
M20	200 427
M20 (pair)	201 427
<b>Wire suspension for 1 m suspension (pair)</b>	200 278
<b>Plastic mounting clamps</b>	
for aggressive atmosphere	200 226
<b>Colour finish according to RAL</b>	401 960
<b>Spare parts</b>	
<b>Face piece with contact insert</b>	513 30
<b>Holding frame</b>	201 95
<b>Mounting clamp</b>	200 222
<b>Contact insert</b>	200 310
<b>Threaded ring</b>	200 309



**Medium beam and narrow beam reflector tube 09 for T5 lamps with insertion ramp, centring and retaining spring**

**Face piece with T5 contact insert**

