


NORKA Luminaire HAMM twin lamp

IP 65      CE shock-tested and in V V-version available

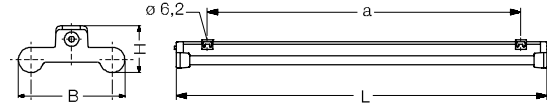


Luminaire HAMM twin lamp

Housing: glass fibre reinforced polyester, lamp holder thermoplastic PBT
Electronics: ballast and starter or electronic ballast, through-wiring 2 x 1,5 mm². 1 access cover 130 mm
Mounting: 2 stainless steel mounting clamps
Gaskets: silicone-/synthetic rubber, non-ageing, form-retaining, short sealing system

Lamps T8  Ø 26 mm

	Dimensions in mm				Weight approx. kg
	L	B	H	a	
36 W	1237	190	83	1070 ± 80	2,3
58 W	1537	190	83	1370 ± 80	3,8

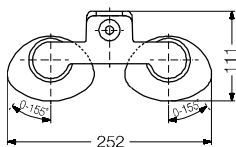


Version/Wattage	Order no.	Version/Wattage	Order no.
Luminaire HAMM twin lamp – standard version –			
2 x 36	ind. 402 41	2 Reflector tubes medium beam – PMMA clear	
	comp. 402 42	– 2 x 36	205 824
	HF 402 47	– 2 x 58	205 826
2 x 58	ind. 402 61	– PMMA clear, inside ribbed	
	comp. 402 62	– 2 x 36	205 834
	HF 402 67	– 2 x 58	205 836
Luminaire HAMM twin lamp with threaded rings 38 mm for protective tube, reflector tube			
2 x 36/40	ind. 402 411	– PC clear (fracture proof)	
	comp. 402 421	– 2 x 36	505 824
	HF 402 47V	– 2 x 58	505 826
2 x 58/65	ind. 402 611	– PC clear (fracture proof), inside ribbed	
	comp. 402 621	– 2 x 36	505 834
	HF 402 67V	– 2 x 58	505 836
Accessories and additional prices			
2 protective tubes Ø 38 mm			
– Clear glass			
– 2 x 36	205 804	2 Reflector tubes medium beam with round louvre, metallised with 2 bi-reflectors	
– 2 x 58	205 806	– PMMA clear	
– Clear glass with reflector			
– 2 x 36	205 805	– 2 x 36	201 485
– 2 x 58	205 807	– 2 x 58	201 487
– PC clear (fracture proof) *			
– 2 x 36	505 814	– PC clear (fracture proof)	
– 2 x 58	505 816	– 2 x 36	501 485
– PC clear (fracture proof) with reflector *			
– 2 x 36	505 815	– 2 x 58	501 487
– 2 x 58	505 817	2 Reflector tubes medium beam	
– PC clear (fracture proof), inside ribbed *			
– 2 x 36	505 914	– PMMA transopal, impact resistant	
– 2 x 58	505 916	– 2 x 36	207 834
– PC clear (fracture proof), inside ribbed, with reflector *			
– 2 x 36	505 915	– 2 x 58	207 836
– 2 x 58	505 917	– PMMA clear, impact resistant	
* For use with safety starter/electronic ballast only			
2 High-efficiency reflector tubes 08 medium beam			
– PMMA clear			
– 2 x 36	208 824	– 2 x 36	207 824
– 2 x 58	208 826	– 2 x 58	207 826
– PC clear (fracture proof)			
– 2 x 36	508 824	– 2 x 36	508 824
– 2 x 58	508 826	– 2 x 58	508 826

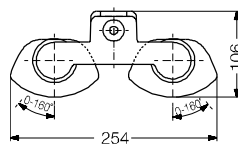
Luminaire HAMM twin lamp



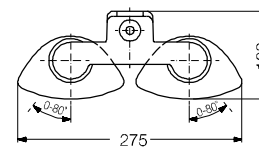
IP 65 shock-tested and in -version available



with reflector tube
medium beam



with high-efficiency reflector tube 08
medium beam



with reflector tube
narrow beam

Version/Wattage	Order no.	Version/Wattage	Order no.
2 Reflector tubes narrow beam		Heat-resistant version +60°C	
- PMMA clear		- 2 x 36	402 854
- 2 x 36	205 994	- 2 x 58	402 856
- 2 x 58	205 996	▽▽-version with low loss ballast	
- PMMA clear with cross louvre		- 2 x 36	402 164
- 2 x 36	205 094	- 2 x 58	402 166
- 2 x 58	205 096	▽▽-version with electronic ballast	
- PC clear (fracture proof)		Shock-tested version	
- 2 x 36	505 994	400 75	
- 2 x 58	505 996	Spare parts	
- PC clear (fracture proof), with cross louvre		Face piece with contact insert	415 51
- 2 x 36	505 094	Starter cover	141 70
- 2 x 58	505 096	Holding frame	201 95
Through-wiring 4 x 1,5 mm²		Contact insert	200 316
- 36	402 804	Starter socket	118 77
- 58	402 806	Threaded ring	
Continuous row version (2 access covers 130 mm) for continuous row mounting		- 26 mm	200 308
- 36	402 084	- 38 mm	200 309
- 58	402 086	Mounting clamp	
Continuous row connector		200 222	
- 4 x 1,5 mm ²	200 413	Ballast	
Safety clamp/theft protection		- 36	214 0
2 x 200 224		- 58	216 5
NORKA safety starter			
electronic	2 x 200 92		
Safety-/rapid starter			
(DEOS)	2 x 200 11		
Plastic cable gland with strain relief			
M 20	200 427		
M 20 (pair)	201 427		
Wire suspension for 1 m suspension			
(pair)	200 278		
Cable suspension for 1 m suspension			
(pair)	200 275		
Plastic mounting clamps			
for aggressive atmosphere	200 226		
Colour finish according to RAL			
	402 960		

