

# HERNE LED 230 V twin lamp

Wire rope luminaire Ø 60 mm

IP 67, IP 68 20 m

IK 08, 650 °C – PMMA \* available on request

HERNE

Tubular luminaire Ø 60 mm with two polymer tubes made of impact strengthened transopal PMMA or clear PC, with internal anodised aluminium reflector. Quick-release fasteners at both ends, flush with the polymer tube. Integrated control gear device, supply power 230 V AC, 50–60 Hz, M20 cable gland. Twin mounting clamp, black, for Ø 4–10 mm wire ropes. Switching: separately 1/3 or 2/3.

The twin tubular luminaire has been specifically developed for street lighting. It is easy to install and highly reliable in operation. The luminaire HERNE allows for easy and tool-free maintenance, as it is equipped with a user-friendly slide-in device carrier system.

The luminaire tubes can be precisely aligned by means of an integral scale.

In addition, the light output level of the HERNE luminaire can be adjusted.



Switching: separately 1/3



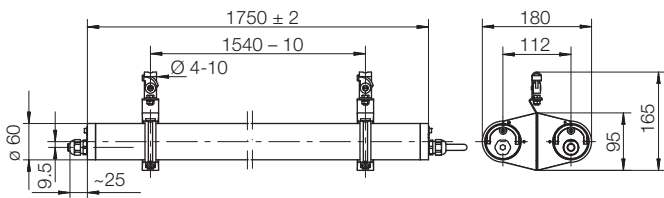
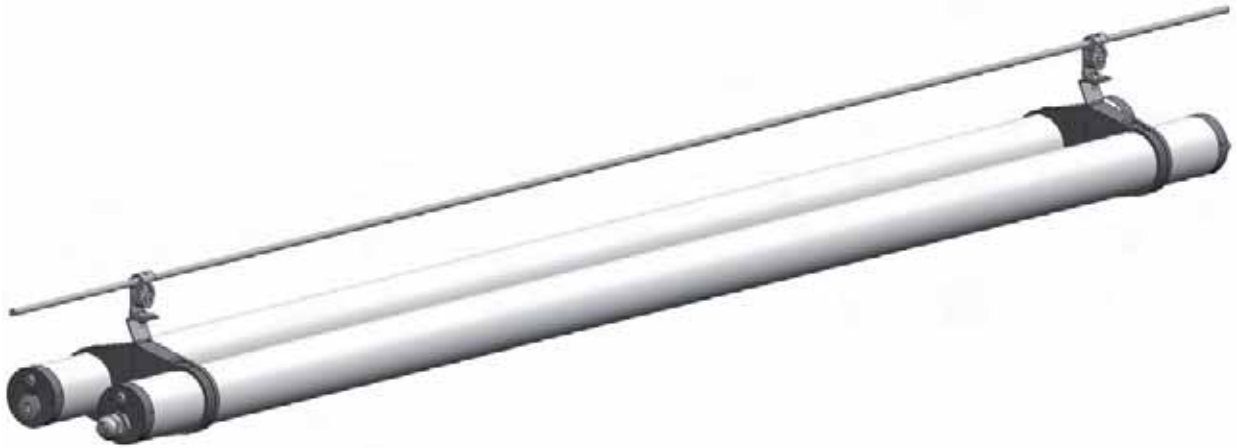
Switching: separately 2/3



Insert for tool-free maintenance

### Luminaire tube in PMMA, transopal (impact strengthened)

Version/W	Colour temperature Kelvin	Ref. no.	Weight kg (approx.)
2 x 24 LED à 2 W	5400	536 224	8.0



Scale for precise luminaire alignment



Comparison of street lighting products front: HERNE, rear: conventional luminaire



Twin mounting clamp black for Ø 4 – 10 mm horizontal wires