



NORKA Luminaire LONDON single and twin lamp

IP 65      (zone 22)* for T8 and T5 lamps
available on request



Low profile aluminium luminaire LONDON - only 73 mm height -

Housing: aluminium, PMMA or PC cover screen in aluminium frame (safety glass screen on request). Cover screen with low glare print design. Anodised internal aluminium reflector, available in wide beam, concentrated beam and asymmetric beam.

Electronics: built-in electronic ballast or low loss ballast and starter. Through-wiring 4 x 1,5 mm², complete with 2 cable entries.

Mounting: four-point fixation on the backside.

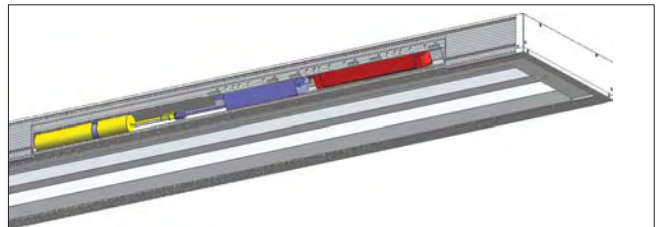
Luminaire is suitable for mounting with matching bolt-on cable trunking.

Version/Wattage	Lamp	Order no.	Weight approx. kg
Luminaire LONDON – standard version –			
with cover screen PMMA and low glare print design			
– wide beam			
1 x 18	T8 ind.	610 210	7,8
	T8 comp.	610 220	7,8
	T8 HF	610 270	7,8
1 x 36	T8 ind.	610 410	13,0
	T8 comp.	610 420	13,0
	T8 HF	610 470	13,0
1 x 58	T8 ind.	610 610	14,6
	T8 comp.	610 620	14,6
	T8 HF	610 670	14,6
1 x 21	T5 HF	610 171	9,2
1 x 24	T5 HF	610 170	7,0
1 x 28	T5 HF	610 070	12,2
1 x 35	T5 HF	610 370	13,6
1 x 39	T5 HF	610 570	9,2
1 x 49	T5 HF	610 970	13,6
1 x 54	T5 HF	610 770	12,2
1 x 80	T5 HF	610 870	13,6

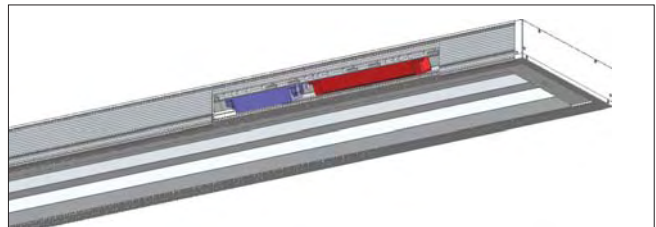
1 x 55	TC-L HF	615 570	6,3
--------	---------	---------	-----

– concentrated beam			
1 x 18	T8 ind.	611 210	7,8
	T8 comp.	611 220	7,8
	T8 HF	611 270	7,8
1 x 36	T8 ind.	611 410	13,0
	T8 comp.	611 420	13,0
	T8 HF	611 470	13,0
1 x 58	T8 ind.	611 610	14,6
	T8 comp.	611 620	14,6
	T8 HF	611 670	14,6
1 x 21	T5 HF	611 171	9,2
1 x 24	T5 HF	611 170	7,0
1 x 28	T5 HF	611 070	12,2
1 x 35	T5 HF	611 370	13,6
1 x 39	T5 HF	611 570	9,2
1 x 49	T5 HF	611 970	13,6
1 x 54	T5 HF	611 770	12,2
1 x 80	T5 HF	611 870	13,6

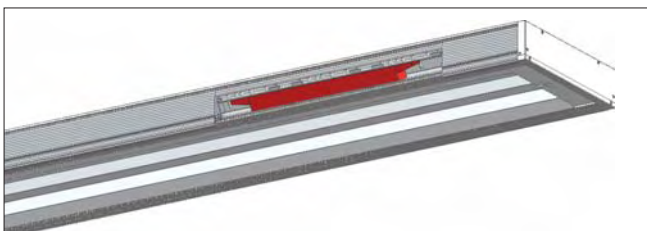
Version/Wattage	Lamp	Order no.	Weight approx. kg
– asymmetric beam			
1 x 18	T8 ind.	614 210	7,8
	T8 comp.	614 220	7,8
	T8 HF	614 270	7,8
1 x 36	T8 ind.	614 410	13,0
	T8 comp.	614 420	13,0
	T8 HF	614 470	13,0
1 x 58	T8 ind.	614 610	14,6
	T8 comp.	614 620	14,6
	T8 HF	614 670	14,6
1 x 21	T5 HF	614 171	9,2
1 x 24	T5 HF	614 170	7,0
1 x 28	T5 HF	614 070	12,2
1 x 35	T5 HF	614 370	13,6
1 x 39	T5 HF	614 570	9,2
1 x 49	T5 HF	614 970	13,6
1 x 54	T5 HF	614 770	12,2
1 x 80	T5 HF	614 870	13,6



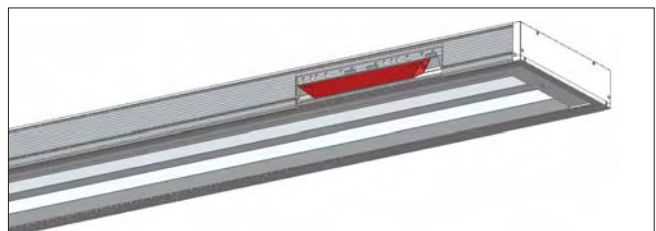
Luminaire LONDON with **electronic ballast and emergency module**



Luminaire LONDON with **electronic ballast and control module**



Luminaire LONDON with **electronic ballast**

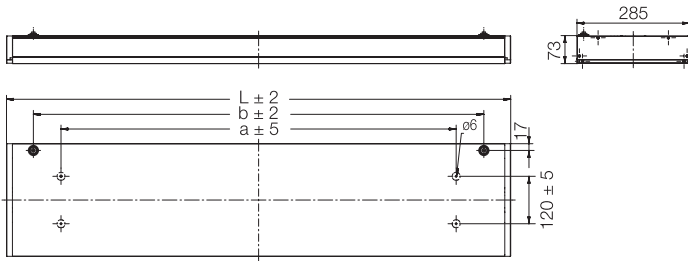


Luminaire LONDON with **emergency electronic ballast**

Luminaire LONDON single and twin lamp



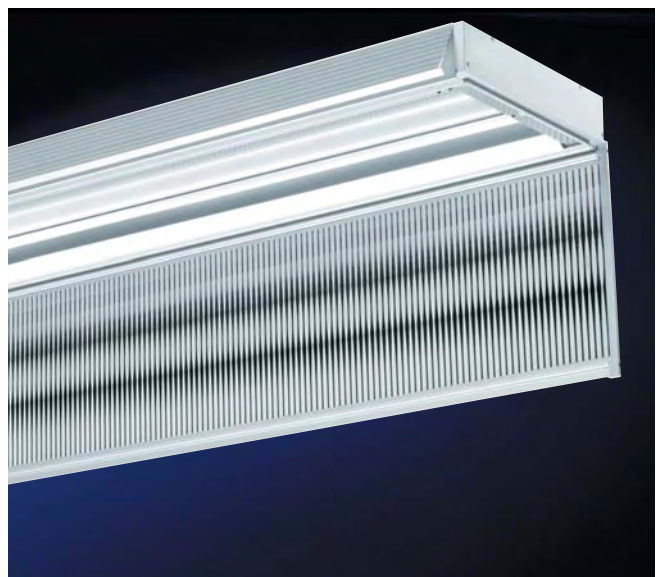
IP 65 CE (zone 22)* for T8 and T5 lamps
available on request



Version/Wattage	Dimensions in mm ± 2 mm			Weight max. kg
	L	a	b	
18 / 24	666	390 ± 5	530	8,8
21 / 39	976	700 ± 5	840	9,6
28 / 36 / 54	1276	1000 ± 5	1140	14,0
35 / 49 / 58 / 80	1576	1300 ± 5	1440	16,1
TC-L 55	666	390 ± 5	530	6,3

Version/Wattage	Lamp	Order no.	Weight approx. kg	Version/Wattage	Lamp	Order no.	Weight approx. kg
Luminaire LONDON – standard version –				– asymmetric beam, with cover screen PMMA clear			
with cover screen PMMA and low glare print design							
– wide beam							
2 x 18	T8 ind. Tandem	612 250	8,8	2 x 18	T8 ind. Tandem	616 250	8,8
	T8 comp. Tandem	612 251	8,8		T8 comp. Tandem	616 251	8,8
2 x 36	T8 HF	612 257	8,8	2 x 36	T8 HF	616 257	8,8
	T8 ind.	612 410	14,0		T8 ind.	616 410	14,0
2 x 58	T8 comp.	612 420	14,0	2 x 58	T8 comp.	616 420	14,0
	T8 HF	612 470	14,0		T8 HF	616 470	14,0
2 x 21	T8 ind.	612 610	16,1	2 x 21	T8 ind.	616 610	16,1
	T8 comp.	612 620	16,1		T8 comp.	616 620	16,1
2 x 24	T8 HF	612 670	16,1	2 x 24	T8 HF	616 670	16,1
	T5 HF	612 270	9,6		2 x 24	T5 HF	616 170
2 x 28	T5 HF	612 070	12,5	2 x 28	T5 HF	616 070	12,5
2 x 35	T5 HF	612 370	14,1	2 x 35	T5 HF	616 370	14,1
2 x 39	T5 HF	612 570	9,6	2 x 39	T5 HF	616 570	9,6
2 x 49	T5 HF	612 970	14,1	2 x 49	T5 HF	616 970	14,1
2 x 54	T5 HF	612 770	12,5	2 x 54	T5 HF	616 770	12,5
2 x 80	T5 HF	612 870	14,1	2 x 80	T5 HF	616 870	14,1
– concentrated beam							
2 x 18	T8 ind. Tandem	613 250	8,8				
	T8 comp. Tandem	613 251	8,8				
	T8 HF	613 257	8,8				
2 x 36	T8 ind.	613 410	14,0				
	T8 comp.	613 420	14,0				
	T8 HF	613 470	14,0				
2 x 58	T8 ind.	613 610	16,1				
	T8 comp.	613 620	16,1				
	T8 HF	613 670	16,1				
2 x 21	T5 HF	613 270	11,5				
2 x 24	T5 HF	613 170	11,5				
2 x 28	T5 HF	613 070	11,5				
2 x 35	T5 HF	613 370	11,5				
2 x 39	T5 HF	613 570	11,5				
2 x 49	T5 HF	613 970	11,5				
2 x 54	T5 HF	613 770	11,5				
2 x 80	T5 HF	613 870	11,5				

NEW items are marked yellow



High ingress protection – at easy and comfortable maintenance

NORKA Luminaire LONDON single and twin lamp

IP 65        (zone 22)* for T8 and T5 lamps
available on request

Version/Wattage

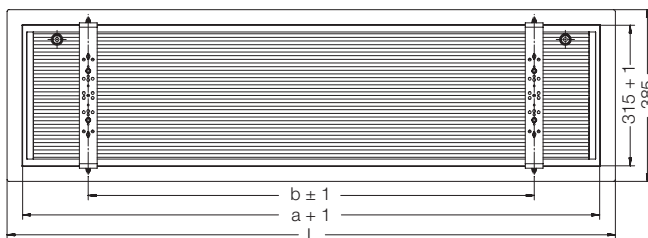
Order no.

Accessories	
Other cover screen material	
- Safety glass	610 001
- PC/Polycarbonate	610 002
- PMMA opal print design	610 000
Through-wiring	
- 4 x 2,5 mm ²	610 82.
Safety locking screw	
for closure	610 003
Additional cable entry	
on face side M20 (pair)	201 438
Ex zone 22	610 16
Wire rope suspension	610 010
Version for bolt-on cable trunking	
	610 103
Parabolic mirror louvre for single lamp version, for cover screen (PMMA, PC, safety glass) without print design	
18 / 24	610 119
21 / 39	610 120
28 / 36 / 54	610 121
35 / 49 / 58 / 80	610 122
please indicate cover screen material	
Ceiling mounting frame, open, with white rim	
- for single mounting	
18 / 24	203 190
28 / 36 / 54	203 191
35 / 49 / 58 / 80	203 192
- for continous row mounting, end frame	
18 / 24	203 193
28 / 36 / 54	203 194
35 / 49 / 58 / 80	203 195
- for continous row mounting, intermediate frame	
18 / 24	203 196
28 / 36 / 54	203 197
35 / 49 / 58 / 80	203 198

NEW items are marked yellow



Ceiling mounting frame:



Version/Wattage	L mm	a + 1 mm	b ± 1 mm	Dimensions of ceiling cut-out
28 / 36 / 54	1364	1294	1000	1310 x 356
35 / 49 / 58 / 80	1664	1594	1300	1610 x 356

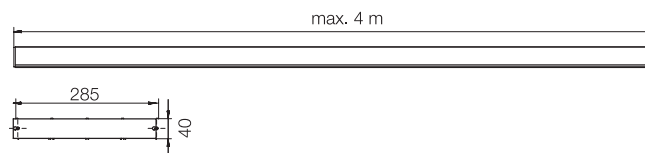
Aluminium cable trunking LONDON

with connection pins and four cable holders



Aluminium cable trunking LONDON

Material: aluminium, corrosion resistant, available in lengths up to 4 m



Version/Wattage	Order no.	Weight approx. kg
Aluminium cable trunking – per meter	610 100	4 kg/m
Additional cable holder	610 105	-
End cap	610 101	-
Cover plate made of 2 mm aluminium – per meter	610 102	1,5
Housing with cover screen PMMA in print design		
18 / 24	610 110	5,1
21 / 39	610 111	6,7
28 / 36 / 54	610 112	9,1
35 / 49 / 58 / 80	610 113	10,9
pre-cut part max. 1,5 m	610 114	7,2 per m
Housing for speaker , with perforated aluminium cover plate, anodised, 300 x 285 mm	611 115	3,9
Cover housing made of aluminium, 70 mm height, with mounting parts		
18 / 24	611 110	3,5
21 / 39	611 111	5,2
28 / 36 / 54	611 112	6,8
35 / 49 / 58 / 80	611 113	8,3
pre-cut part max. 2,0 m	611 114	5,3 per m

