

LONDON single lamp or twin lamp

Aluminium profile luminaire

LONDON T5/T8/TC-L

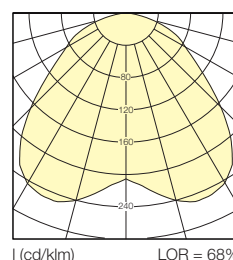
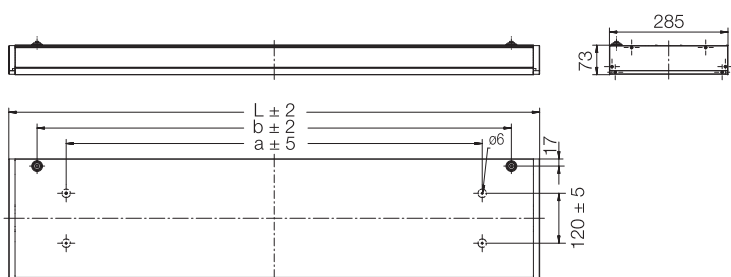
IP 65       * available on request
 IK 08, 650 °C – PMMA, IK 10, 850 °C – PC
 IK 07, 960 °C – glass -certified

Single-lamp or twin lamp aluminium profile luminaire. Luminaire housing made of anodised aluminium with cover screen in PMMA, PC or safety glass in aluminium frame. Glare reduction of cover screen through decorative screen print pattern. Internal aluminium mirror finish reflector, wide, concentrated or asymmetric beam. With integrated low loss ballast and starter or electronic control gear. Through wiring 4 x 1.5 mm². Ready for connection through two cable entries at rear. Four-point fixation rearward.



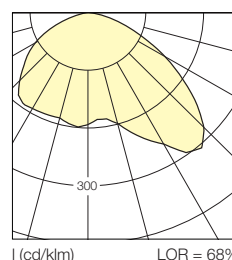
Single lamp, with cover screen in PMMA with decorative screen print pattern – standard version –

wide beam				concentrated beam				asymmetric beam, clear			
1 x 49 W	T5	ECG	610 970	1 x 49 W	T5	ECG	611 970	1 x 49 W	T5	ECG	614 970
1 x 54 W	T5	ECG	610 770	1 x 54 W	T5	ECG	611 770	1 x 54 W	T5	ECG	614 770
1 x 80 W	T5	ECG	610 870	1 x 80 W	T5	ECG	611 870	1 x 80 W	T5	ECG	614 870
1 x 55 W	TC-L	ECG	615 570				-				-
1 x 36 W	T8	comp.	610 420	1 x 36 W	T8	comp.	611 420	1 x 36 W	T8	comp.	614 420
	T8	ECG	610 470		T8	ECG	611 470		T8	ECG	614 470
1 x 58 W	T8	comp.	610 620	1 x 58 W	T8	comp.	611 620	1 x 58 W	T8	comp.	614 620
	T8	ECG	610 670		T8	ECG	611 670		T8	ECG	614 670



1 (cd/klm) LOR = 68%

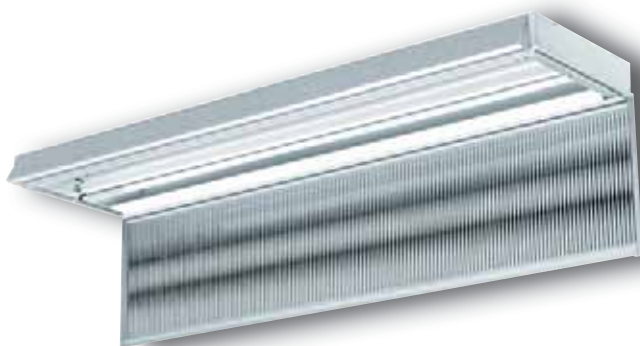
2 x 36 W
lamp diffuser
PMMA clear,
wide beam



1 (cd/klm) LOR = 68%

2 x 36 W
lamp diffuser
PMMA clear,
asymmetric beam

Version	Dimensions in mm (± 2 mm)			Weight kg (max.)
	L	a	b	
36/54 W	1276	1000 ± 5	1140	14.0
49/58/80 W	1576	1300 ± 5	1440	16.1
TC-L 55 W	666	390 ± 5	530	6.3



double insulated – protection class II

Advantages:

- high IP rating
- tool-free opening
- quick and easy maintenance
- anti-glare screen by means of screen print pattern

Twin lamp, with cover screen in PMMA with decorative screen print pattern – standard version –

wide beam				concentrated beam				asymmetric beam, clear			
2 x 49 W	T5	ECG	612 970	2 x 49 W	T5	ECG	613 970	2 x 49 W	T5	ECG	616 970
2 x 54 W	T5	ECG	612 770	2 x 54 W	T5	ECG	613 770	2 x 54 W	T5	ECG	616 770
2 x 80 W	T5	ECG	612 870	2 x 80 W	T5	ECG	613 870	2 x 80 W	T5	ECG	616 870
2 x 36 W	T8	comp.	612 420	2 x 36 W	T8	comp.	613 420	2 x 36 W	T8	comp.	616 420
	T8	ECG	612 470		T8	ECG	613 470		T8	ECG	616 470
2 x 58 W	T8	comp.	612 620	2 x 58 W	T8	comp.	613 620	2 x 58 W	T8	comp.	616 620
	T8	ECG	612 670		T8	ECG	613 670		T8	ECG	616 670

DB-certified

LONDON T5/T8/TC-L



1

Empty housing with PMMA cover screen with decorative screen print pattern



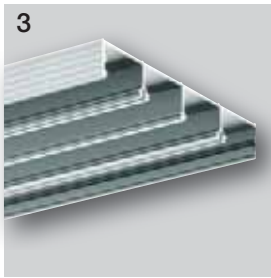
2

Empty housing with opal cover screen



3

Luminaire with cable suspension system



4

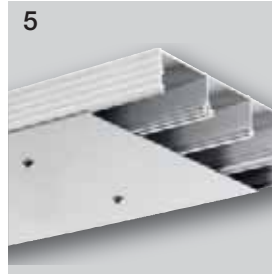
Trunking system in aluminium with connecting pins and four cable holders



1. Empty housing with cover screen, PMMA with decorative screen print pattern

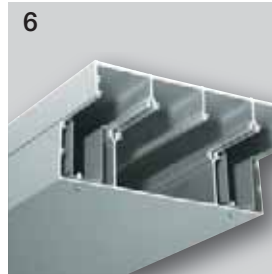
		Weight (approx.)
18/24 W	610 110	5.1 kg
21/39 W	610 111	6.7 kg
28/36/54 W	610 112	9.1 kg
35/49/58/80 W	610 113	10.9 kg
max. 1.5 m per section	610 114	7.2 kg/m

with opal cover screen available on request



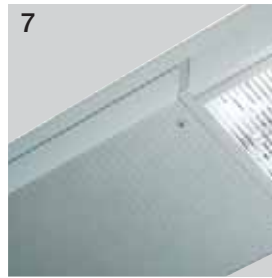
5

Cover plate in aluminium, 2 mm



6

Fixation for blind cover



7

Blind cover, 70 mm



8

Empty housing for speaker installation, with perforated aluminium cover

2. Cable suspension 610 010

3. Aluminium trunking system per full/partial metre section 610 100 4 kg

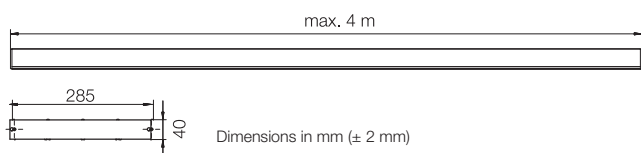
Additional cable holder 610 105 -

End cap 610 101 -



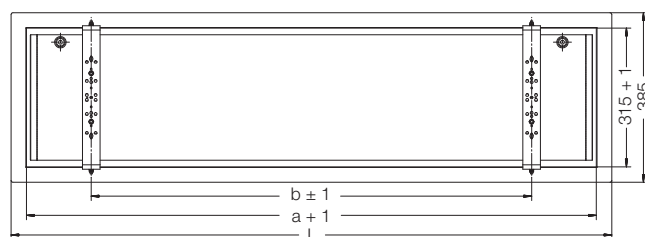
LONDON with aluminium trunking system

LONDON trunking system in aluminium, corrosion resistant, available in standard lengths of up to 4.0 m



Recessed ceiling mounting frame

	L	a + 1	b \pm 1	required ceiling cut-out
28/36/54 W	1364	1294	1000	1310 x 356
35/49/58/80 W	1664	1594	1300	1610 x 356



4. Screw fixation
for locking mechanism 610 003

5. Cover plate in aluminium,
2 mm per full/partial
metre section 610 102 1.5 kg

6./7. Blind cover
aluminium, 70 mm high, with fixation

		Weight (approx.)
18/24 W	611 110	3.5 kg
21/39 W	611 111	5.2 kg
28/36/54 W	611 112	6.8 kg
35/49/58/80 W	611 113	8.3 kg
per section max. 2.0 m	611 114	5.3 kg/m

8. Housing loudspeaker
with aluminium cover,
300 x 285 x 70 mm, perforated
611 115 3.9 kg