

IP 65 IK 04, 650 °C – PMMA
IK 09, 850 °C – PC



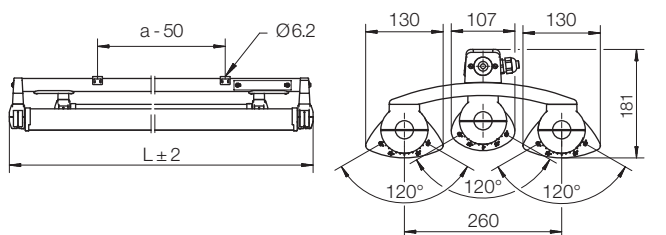
Triple lamp polymer luminaire made of fibreglass reinforced polyester, lampholders in PBT polymer, lamp diffuser with reflector tube (optional). Built-in electronic control gear. 4-pole terminal 4 x 2.5 mm², suitable to connect through. Ready for connection through access cover with two M20 cable glands. Two stainless steel mounting clamps, for variable mounting distance. Quick installation thanks to tool-free lamp change.

Reflector tubes for luminaire MELBOURNE, see pages 12–13.



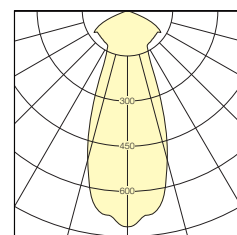
MELBOURNE T5

Triple lamp		Twin lamp	
2 x 80 W + 1 x 54 W	691 671	2 x 35/49/80 W	691 67
2 x 80 W + 1 x 95 W	691 672	2 x 120 W	691 87
2 x 120 W + 1 x 54 W	691 871		
2 x 120 W + 1 x 95 W	691 872		



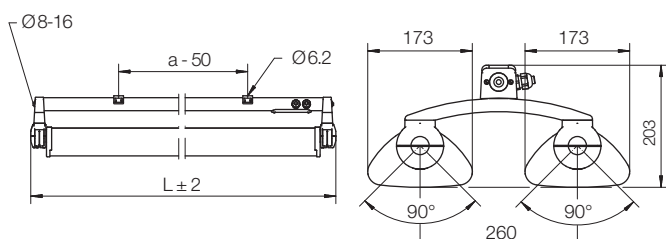
Narrow beam/medium beam/narrow beam

Version	Dimensions in mm		Weight kg (approx.)
	L ± 2	a - 50	
2 x 80 W + 1 x 54 W	1510	930	7.4
2 x 80 W + 1 x 95 W	1510	930	7.4
2 x 120 W + 1 x 54 W	1510	930	7.5
2 x 120 W + 1 x 95 W	1510	930	7.5



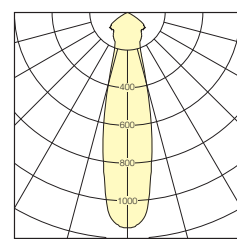
I (cd/klm) LOR = 97 %

Narrow beam reflector,
PMMA clear



Concentrated beam/concentrated beam

Version	Dimensions in mm		Weight kg (approx.)
	L ± 2	a - 50	
2 x 35/49/80 W	1510	930	6.4
2 x 120 W	1510	930	6.5



I (cd/klm) LOR = 101 %

Concentrated beam
reflector,
PMMA clear



The MELBOURNE luminaire can be used to fully replace high-bay luminaires with high-pressure lamps. In combination with longlife lamps and Industry ECG the lamp replacement and maintenance interval is extended significantly.