






IP 65     850 °C, vandalism proof  40 Joule

DB-certified

* available on request

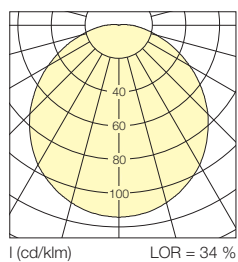
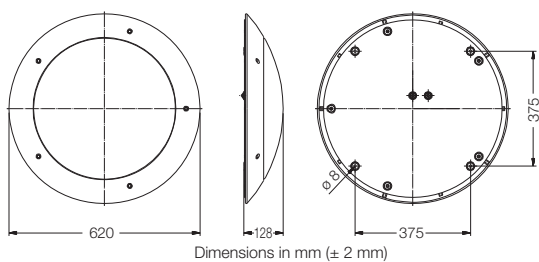
ROSTOCK

Vandalism proof surface mounted luminaire twin lamp or triple lamp. Luminaire housing in cast aluminium, RAL 9006, Ø 620 mm, luminaire chassis made in stainless steel. Lamp diffuser in PC opal, 4 mm, impact-proof. With integrated low loss ballast and starter or electronic control gear. Suitable for separate switching. Ready for connection with two rearward M20 cable glands. Four Ø 8 mm fastening bores at the rear. Weight approx. 11.5 kg. Also available in protection class I version. Also available in RAL colours.



ROSTOCK surface mounted luminaire
– standard version –

3 x TC-L	24 W	ind.	316 325
3 x TC-L	24 W	ECG	316 324
1 x FC	22/55 W	ECG	316 155



3 x TC-L/24 W
as standard

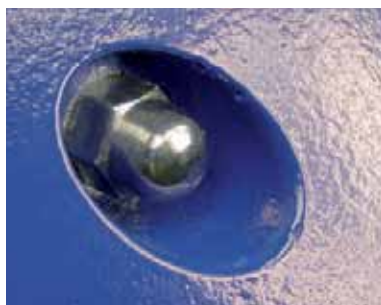


Emergency light with add. E14 socket, max. 15 W



2 x Circline
1 x 22 W / 1 x 55 W

3 x TC-L 24 W



Standard version:
stainless steel cap nut



Special version:
stainless steel 3-hole nut



Anti-graffiti coating
available on request,
allowing for easy removal
of paint and other pollution
with conventional graffiti
removers.

