

TURKU LED single lamp or twin lamp

Polymer luminaire, ambient temperature -30 °C to +15 °C

IP 65 ∇ \square **CE** IK 04, 650 °C – PMMA



**TURKU LED luminaire, single lamp,
with reflector tube, PMMA clear, 80 lm/W, 5400 K**

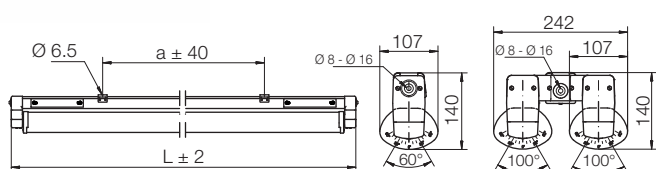
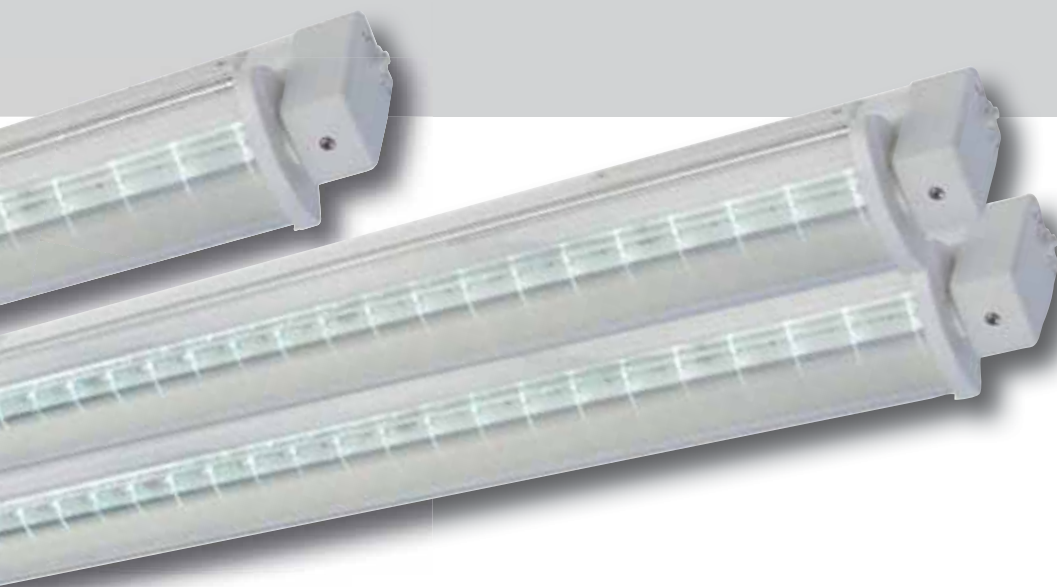
Beam angle	120°	1 x 36	LED	50 W	430 315
with Fresnel lens	12°	1 x 36	LED	50 W	430 317
with Fresnel lens	30°	1 x 36	LED	50 W	430 318
with Fresnel lens	60°	1 x 36	LED	50 W	430 319

TURKU LED

Single lamp or twin lamp polymer luminaire made in fibreglass reinforced polyester, cold resistance to -30 °C. Clear PMMA reflector tube, with built-in aluminium carrier profile for optimised thermo management, equipped with high-performance 1.2 W LED, (36 LED in single lamp, 2 x 36 LED in twin lamp) and 12°, 30°, 60° or 120° high-efficiency linear Fresnel lens.

Integrated thermally separated transformer.

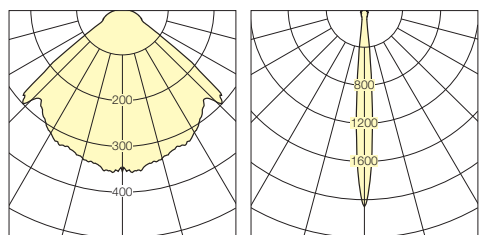
Permissible temperature range -30 °C to +15 °C. Power supply 230 V AC/DC, 0/50/60 Hz.



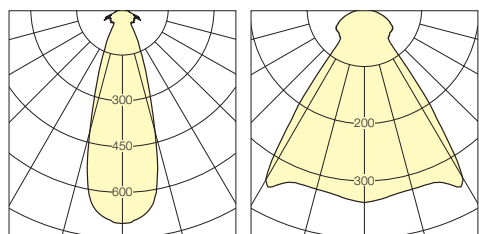
Version	Dimensions in mm (± 2 mm)				Weight kg (approx.)
	L ± 2	W	H	a ± 40	
single lamp	1551	107	140	890 ± 40	4.0
twin lamp	1551	242	140	1220 ± 40	7.0

Access cover

single lamp: lateral
twin lamp: centered



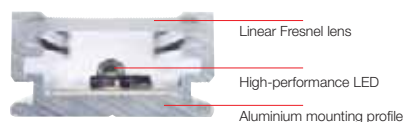
I (cd/klm) LOR = 91 % white, 80 lm/W, beam angle 120°
I (cd/klm) LOR = 75 % white, 80 lm/W with linear Fresnel lens 12°



I (cd/klm) LOR = 76 % white, 80 lm/W with linear Fresnel lens 30°
I (cd/klm) LOR = 76 % white, 80 lm/W with linear Fresnel lens 60°

TURKU LED at a glance

- ✓ Instant light
- ✓ Improved energy balance/
CO₂ emission reduction
- ✓ Longlife light source
- ✓ Ideal for safety lighting
- ✓ Low heat generation
- ✓ Directed light
- ✓ Swivelling reflector
- ✓ Jet water and
dust proof (IP 65)
- ✓ Ideal for mobile rack systems
- ✓ No lamp change needed
- ✓ Average service life
of LED 100 000 hours
- ✓ Suitable for frequent switching



**TURKU LED luminaire, twin lamp,
with reflector tube, PMMA clear, 80 lm/W, 5400 K**

Beam angle	120°	2 x 36	LED	100 W	432 315
with Fresnel lens	12°	2 x 36	LED	100 W	432 317
with Fresnel lens	30°	2 x 36	LED	100 W	432 318
with Fresnel lens	60°	2 x 36	LED	100 W	432 319