

# TURKU single lamp or twin lamp

Polymer luminaire, cold resistant to -25 °C

IP 65 IK 04, 650 °C – PMMA



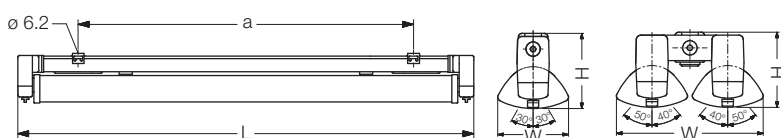
Single lamp or twin lamp polymer luminaire made in fibreglass reinforced polymer, cold resistant to -25 °C. Reflector tube made in PMMA with NORKA DUPLEX cold protection system. Integrated aluminium mirror finish reflector for narrow or concentrated wide beam. Pressure caps with knurled screws for tool-less lamp change. With integrated low loss ballast and starter or electronic control gear (cold resistant to -25 °C). Ready for connection through two M20 cable entries, cold resistant through wiring 2 x 1.5 mm<sup>2</sup>. Two stainless steel mounting clamps for variable mounting distance.



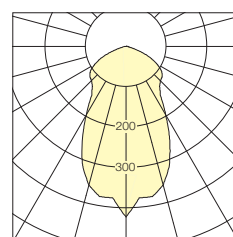
# TURKU T5/T8

TURKU AMALGAM with NORKA DUPLEX cold protection system  
PMMA, concentrated wide beam T5

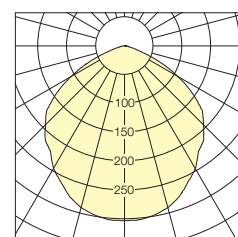
single lamp			twin lamp		
1 x 54 W	ECG	430 770	2 x 54 W	ECG	432 770
1 x 80 W	ECG	430 870	2 x 80 W	ECG	432 870



Version	Lamp	Dimensions in mm ( $\pm 2$ mm)				Weight kg (approx.)
		L	W	H	a	
1 x 18 W	T8	641	130	136	420 $\pm$ 30	2.5
1 x 36 W	T8	1251	130	136	980 $\pm$ 80	3.6
1 x 58 W	T8	1551	130	136	1280 $\pm$ 80	4.6
2 x 36 W	T8	1251	265	136	920 $\pm$ 80	6.2
2 x 58 W	T8	1551	265	136	1220 $\pm$ 80	8.0
1 x 54 W	T5	1200	130	136	930 $\pm$ 80	3.6
1 x 80 W	T5	1500	130	136	1230 $\pm$ 80	3.5
2 x 54 W	T5	1200	265	136	930 $\pm$ 80	4.8
2 x 80 W	T5	1500	265	136	1230 $\pm$ 80	5.6



1 (cd/klm) LOR = 74 %  
1 x T8 / 58 W  
PMMA clear,  
narrow beam



2 (cd/klm) LOR = 75 %  
2 x T8 / 58 W  
PMMA clear,  
concentrated wide beam



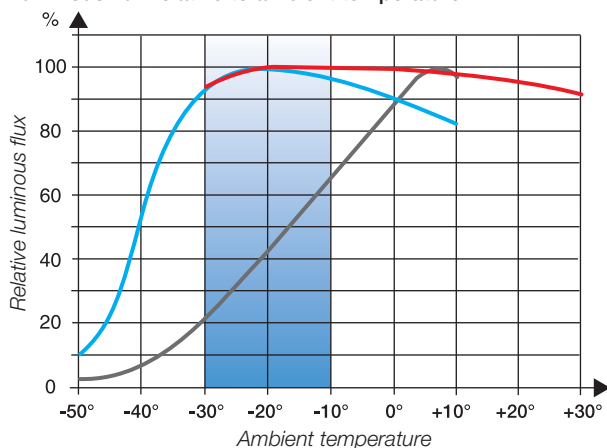
**NORKA DUPLEX cold protection system for ambient temperatures down to -25 °C**

The use of two thermal insulation tubes ensures a luminous flux of 100 % with low loss ballast and of 75 % with electronic control gear at -20 °C.

**Advantages of TURKU AMALGAM over cold room luminaire 58 W / ECG 80 W**

- with 80 W amalgam lamp, min. luminous flux 90 % at -25 °C
- even longer lamp service life
- 47 % fewer luminaires, lower installation costs
- fast and easy lamp change thanks to automatic lamp centring system
- 52 % lower investment costs
- 17 % lower energy consumption or connected load

**Luminous flux relative to ambient temperature**



- Diffuser luminaire T8 / 58 W, LLB
- TURKU T8 / 58 W, LLB
- TURKU AMALGAM T5 / 80 W

**TURKU with NORKA DUPLEX cold protection system PMMA concentrated wide beam, T8**

single lamp			twin lamp		
1 x 18 W	comp.	430 220	2 x 36 W	comp.	432 420
	ECG	430 270		ECG	432 470
1 x 36 W	comp.	430 420	2 x 58 W	comp.	432 620
	ECG	430 470		ECG	432 670
1 x 58 W	comp.	430 620			
	ECG	430 670			

# TURKU LED single lamp or twin lamp

Polymer luminaire, ambient temperature -30 °C to +15 °C

IP 65 IK 04, 650 °C – PMMA



TURKU LED

Single lamp or twin lamp polymer luminaire made in fibreglass reinforced polyester, cold resistance to -30 °C. Clear PMMA reflector tube, with built-in aluminium carrier profile for optimised thermo management, equipped with high-performance 1.2 W LED, (36 LED in single lamp, 2 x 36 LED in twin lamp) and 12°, 30°, 60° or 120° high-efficiency linear Fresnel lens.

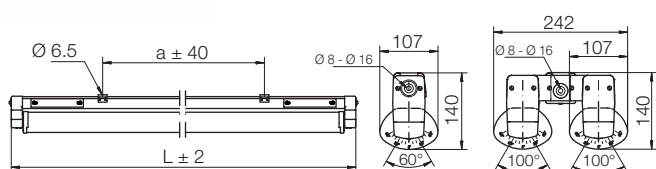
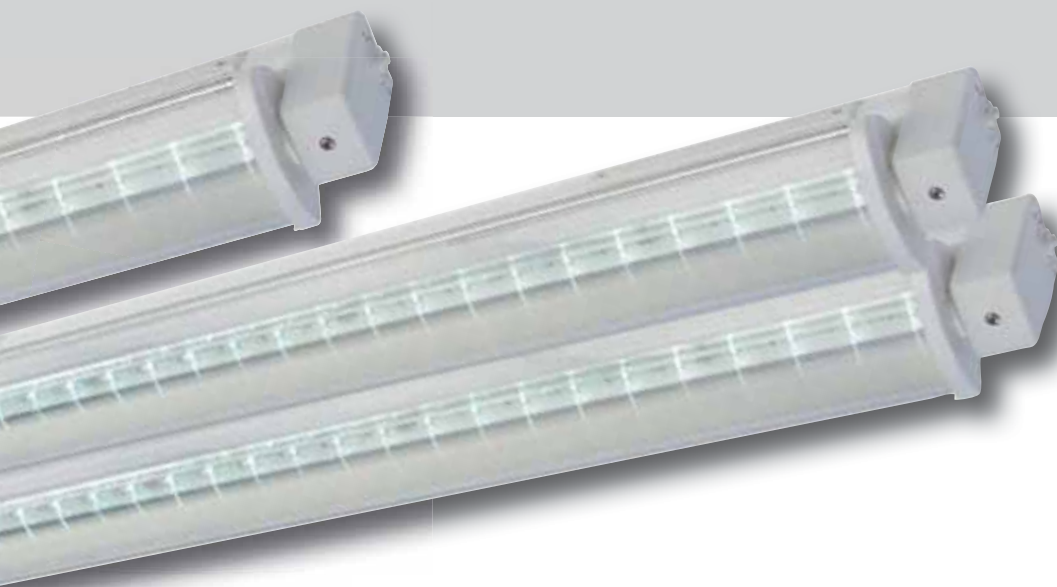
Integrated thermally separated transformer.

Permissible temperature range -30 °C to +15 °C. Power supply 230 V AC/DC, 0/50/60 Hz.



**TURKU LED luminaire, single lamp, with reflector tube, PMMA clear, 80 lm/W, 5400 K**

Beam angle	120°	1 x 36	LED	50 W	430 315
with Fresnel lens	12°	1 x 36	LED	50 W	430 317
with Fresnel lens	30°	1 x 36	LED	50 W	430 318
with Fresnel lens	60°	1 x 36	LED	50 W	430 319



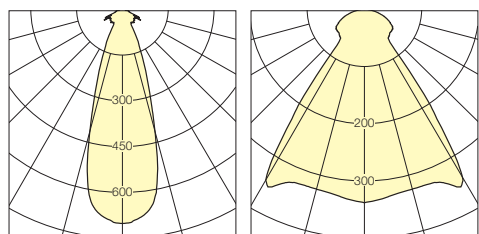
Version	Dimensions in mm (± 2 mm)				Weight kg (approx.)
	L ± 2	W	H	a ± 40	
single lamp	1551	107	140	890 ± 40	4.0
twin lamp	1551	242	140	1220 ± 40	7.0

#### Access cover

single lamp: lateral  
twin lamp: centered



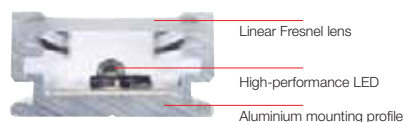
I (cd/klm) LOR = 91 % white, 80 lm/W, beam angle 120°  
I (cd/klm) LOR = 75 % white, 80 lm/W with linear Fresnel lens 12°



I (cd/klm) LOR = 76 % white, 80 lm/W with linear Fresnel lens 30°  
I (cd/klm) LOR = 76 % white, 80 lm/W with linear Fresnel lens 60°

#### TURKU LED at a glance

- ✓ Instant light
- ✓ Improved energy balance/  
CO<sub>2</sub> emission reduction
- ✓ Longlife light source
- ✓ Ideal for safety lighting
- ✓ Low heat generation
- ✓ Directed light
- ✓ Swivelling reflector
- ✓ Jet water and  
dust proof (IP 65)
- ✓ Ideal for mobile rack systems
- ✓ No lamp change needed
- ✓ Average service life  
of LED 100 000 hours
- ✓ Suitable for frequent switching



#### TURKU LED luminaire, twin lamp, with reflector tube, PMMA clear, 80 lm/W, 5400 K

Beam angle	120°	2 x 36	LED	100 W	432 315
with Fresnel lens	12°	2 x 36	LED	100 W	432 317
with Fresnel lens	30°	2 x 36	LED	100 W	432 318
with Fresnel lens	60°	2 x 36	LED	100 W	432 319