

IP 44 Protection class I, 850 °C, vandalism proof 40 Joule

Vandalism proof luminaire

Impact-resistant vandalism proof surface mounted luminaire in stainless steel, with structured PC lamp diffuser, 3 mm thick, with stainless steel end caps.

Lamp options:

– T5 ECG

– T8 low loss ballast or ECG

Dimmable version available on request.

Emergency ballast available on request. Four cable entries at the rear, two oval sealing screws

Fixation through four concealed fastening bores at the rear.

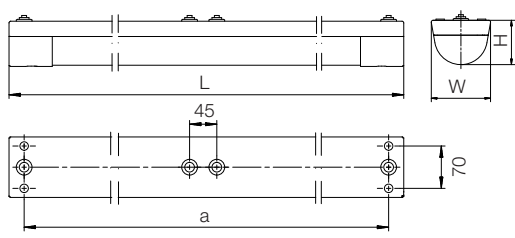
Applications: Multi-storey car parks, areas exposed to vandalism, prisons and detention cells.



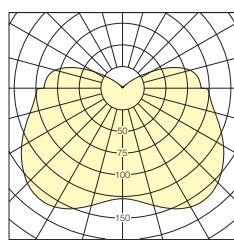
WUPPERTAL

1 x 24 W	T5 ECG	717 17	1 x 18 W	T8 ECG	717 27	1 x 18 W	T8 comp.	717 22
1 x 49 W	T5 ECG	717 97	1 x 36 W	T8 ECG	717 47	1 x 36 W	T8 comp.	717 42
1 x 54 W	T5 ECG	717 77	1 x 58 W	T8 ECG	717 67	1 x 58 W	T8 comp.	717 62
1 x 80 W	T5 ECG	717 87						

Dimmable version available on request



Dimensions in mm (± 2 mm)



1 x T5/80 W
wide beam

Version	Lamp	Switching	Dimensions in mm (± 2 mm)			a	Weight kg (approx.)
			L	W	H		
1 x 24 W	T5	ECG	740	100	75	690	4.0
1 x 49 W	T5	ECG	1640	100	75	1590	6.7
1 x 54 W	T5	ECG	1340	100	75	1290	5.9
1 x 80 W	T5	ECG	1640	100	75	1590	6.7
1 x 18 W	T8	ECG	740	100	75	690	4.0
1 x 36 W	T8	ECG	1340	100	75	1290	5.9
1 x 58 W	T8	ECG	1640	100	75	1590	6.7
1 x 18 W	T8	comp.	740	100	75	690	4.1
1 x 36 W	T8	comp.	1340	100	75	1290	5.8
1 x 58 W	T8	comp.	1640	100	75	1590	7.4



Oval sealing screw prevents unauthorised opening



High impact-resistant structured PC lamp diffuser