

ZÜRICH T5/T8/TC-L

IP 66 ∇ ∇^* CE Protection class I
 IK 07, 650 °C – PMMA * available on request
 IK 08, 850 °C – PC

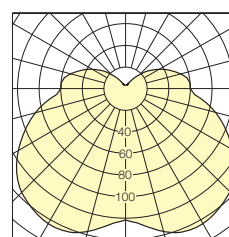
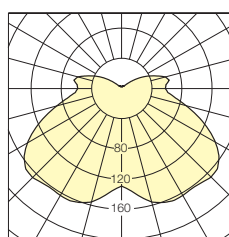
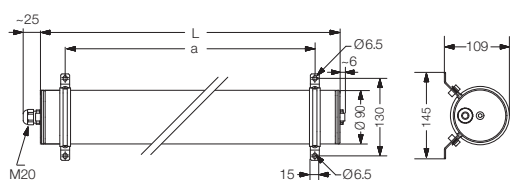
Single lamp or twin lamp tubular luminaire, Ø 90 mm made of transopal PMMA, clear PMMA or clear PC with internal aluminium reflector.
 With integrated low loss ballast and starter or ECG. Ready for connection with M20 cable gland.
 Two stainless steel mounting clamps for installation, variable mounting distance.



Version in PMMA, transopal

1 x 18 W	T8	ECG	756 27	2 x 18 W	T8	ECG	753 27
1 x 36 W	T8	ECG	756 47	2 x 36 W	T8	ECG	753 47
1 x 58 W	T8	ECG	756 67	2 x 58 W	T8	ECG	753 67
1 x 36 W	TC-L	ECG	756 17	2 x 39 W	T5	ECG	753 57
1 x 55 W	TC-L	ECG	756 37	2 x 49 W	T5	ECG	753 97
1 x 39 W	T5	ECG	756 57	2 x 54 W	T5	ECG	753 77
1 x 49 W	T5	ECG	756 97				
1 x 54 W	T5	ECG	756 77				
1 x 80 W	T5	ECG	756 87				

PMMA, clear and other switching options available on request



Version	Lamp	Dimensions in mm (± 2 mm)	
		L	a
1 x 18/2 x 18 W	T8	746	660
1 x 36/2 x 36 W	T8	1356	1270
1 x 58/2 x 58 W	T8	1656	1570
1 x 36 W	TC-L	585	490
1 x 55 W	TC-L	705	610
1 x 39/2 x 39 W	T5	1056	970
1 x 49/2 x 49/1 x 80 W	T5	1656	1570
1 x 54/2 x 54 W	T5	1356	1270

I (cd/klm) LOR = 72 %
2 x T5/54 W
wide beam

I (cd/klm) LOR = 65 %
2 x T8/58 W
wide beam

Highly economical even under extreme operating conditions thanks to wide range of material options



Advantages of transopal PMMA:

- Resistant to acids and alkalines
- Resistant to fuels and impact
- UV resistant
- Glare reduction without loss of light
- Design-based application

Common applications:

- Canopies
- Food processing industry
- Work pits
- Arch illumination
- Decorative outdoor lighting

Advantages of clear PMMA:

- Resistant to acids and alkalines
- resistant to fuels
- UV resistant

Common applications:

- Petrol stations
- Car wash
- Work pits
- Industrial plants
- Canopies

Advantages of clear PC (fracture proof):

- Impact resistant
- Fracture proof
- Fire retardant
- Self-extinguishing

Common applications:

- Indoor car parks
- Infrastructure
- Underpass
- Greenhouses
- Shopping areas

Advantages of PC, clear (fracture proof)

1 x 18 W	T8	ECG	755 27	2 x 18 W	T8	ECG	752 27
1 x 36 W	T8	ECG	755 47	2 x 36 W	T8	ECG	752 47
1 x 58 W	T8	ECG	755 67	2 x 58 W	T8	ECG	752 67
1 x 36 W	TC-L	ECG	755 17	2 x 39 W	T5	ECG	752 57
1 x 55 W	TC-L	ECG	755 37	2 x 49 W	T5	ECG	752 97
1 x 39 W	T5	ECG	755 57	2 x 54 W	T5	ECG	752 77
1 x 49 W	T5	ECG	755 97				
1 x 54 W	T5	ECG	755 77				
1 x 80 W	T5	ECG	755 87				

Other switching versions available on request

IP 66 ∇ ∇^* CE Protection class I
 IK 07, 650 °C – PMMA * available on request
 IK 08, 850 °C – PC

ZÜRICH LED / EX

Tubular luminaire Ø 90 mm, made of PMMA or PC, clear. Equipped with 2 x 36 high-performance 1.2 W LED, beam angle 12°, 30° or 60° with linear Fresnel lens. Special PCB system for optimised thermo management. LED light colour temperature 5400 K. Mounting clamps with stainless steel bracket included with luminaire. Permissible temperature range -30 °C to +10 °C. Power supply 230 V AC/DC, 0/50/60 Hz; suitable for centralised emergency lighting systems, with integrated transformer.

ZÜRICH LED



ZÜRICH LED tubular luminaire with integrated transformer, for ambient temperatures between -30 °C and +10 °C, 86 W, 80 lm/W, 5400 K, **PC, clear (fracture proof)**

Version			Ref. no.	Weight kg (approx.)
2 x 36 LED	with Fresnel lens	12°	752 237	6.2
	with Fresnel lens	30°	752 238	6.2
	with Fresnel lens	60°	752 239	6.2

Through wiring

3 x 2.5 mm ²	752 946
5 x 2.5 mm ²	752 396

Optional: Colour temperature 3300 K, 4000 K
Other versions available on request

ZÜRICH EX

Explosion proof tubular luminaire Ø 90 mm



IP 66, Protection class I, $\text{CE} \dots \text{Ex}$ II 2 D Ex tD A21, for zones 2, 21 and 22, T80 °C
IK 08, 850 °C – PC

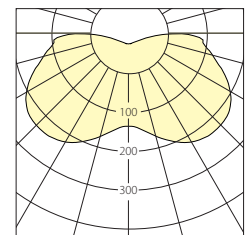
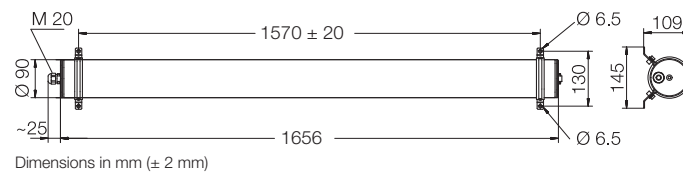


ZÜRICH EX

Polymer tube Ø 90 mm made of PC clear (fracture proof), with internal aluminium chassis, available with additional mirror finish reflector. Integrated ECG for T5/39 W or 54 W lamps. Stainless steel mounting clamps for wall and ceiling installation.

ZÜRICH LED

Wall and ceiling installation

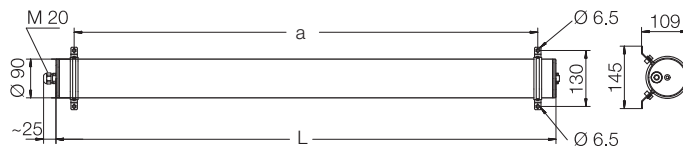


I (cd/klm) LOR = 95 %

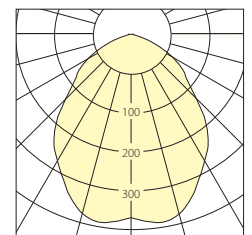
1 x T5/54 W
wide beam

ZÜRICH EX

Wall and ceiling installation



Version	Ø	Dimensions in mm (± 2 mm)		Weight kg (approx.)
		L	a	
39 W	90	1056	970	2.5
54 W	90	1356	1270	2.5



I (cd/klm) LOR = 90 %

1 x T5/54 W
concentrated
wide beam



Stainless steel mounting clamps
for wall and ceiling installation
included in delivery



Stainless steel mounting clamps
for suspension system
available on request

ZÜRICH EX tubular luminaire, PC, clear (fracture proof)

Version	Ref. no.	Version	Ref. no.
wide beam		concentrated wide beam	
1 x 39 W	ECG 755 570	1 x 39 W	ECG 755 575
1 x 54 W	ECG 755 770	1 x 54 W	ECG 755 775